



Bangi double-glass solar modules





Bangi double-glass solar modules



Longi HiMO X10 Explorer 645W 640W 635W 630W Double Glass Bifacial Solar

A: The double-glass construction and IP68-rated junction box make the Longi HiMO X10 Explorer highly durable, resistant to dust, moisture, and extreme weather conditions.

[Request Quote](#)

LONGi glass-glass bifacial modules

Thanks to the bifacial cell layout, they can convert not only direct sunlight but also reflected light from the back into electricity. The double-sided glass structure also protects the cells from ...

[Request Quote](#)



[LONGi debuts Hi-MO X6 Bifacial Dual-Glass solar ...](#)

LONGi showcased its new Hi-MO X6 Bifacial Dual-Glass solar modules during the 19th China (Jinan) International Solar Energy ...

[Request Quote](#)



[LONGi Launches Revolutionary Hi-MO X6 Bifacial ...](#)

LONGi is delighted to unveil its groundbreaking Hi-MO X6 Bifacial Dual-Glass solar modules during the 19th China (Jinan) ...

[Request Quote](#)



[LONGi's new bifacial module uses thicker glass to](#)

LONGi has launched a new solar panel designed for durability and reliability in hail and windstorms. The Hi-MO 5 Ice-Shield module is a dual-glass bifacial panel that uses ...

[Request Quote](#)



[LONGi debuts Hi-MO X6 Bifacial Dual-Glass solar modules](#)

LONGi showcased its new Hi-MO X6 Bifacial Dual-Glass solar modules during the 19th China (Jinan) International Solar Energy Utilization Conference. The Hi-MO X6 Bifacial ...

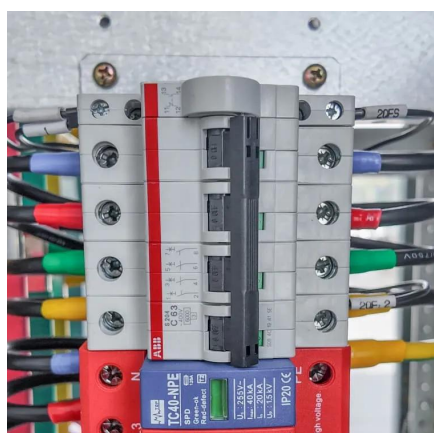
[Request Quote](#)



LONGi Launches Revolutionary Hi-MO X6 Bifacial Dual-Glass Modules

Designed for versatility, the Hi-MO X6 Bifacial Dual-Glass modules cater to a wide range of PV application scenarios, such as distributed roofs, PV carports, and winter gardens.

[Request Quote](#)



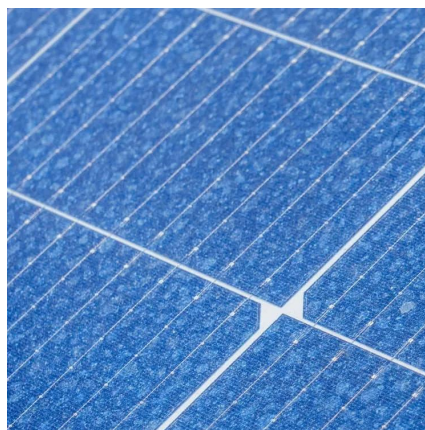
[Longi Photovoltaic Double Glass](#)



Transparent ...

We deliver the world's most complete and cost-effective solar PV solutions. Our in-house engineering and product development ensure that every ...

[Request Quote](#)



Longi Bifacial Dual Glass Pv Module Solar Panel 575W Mono ...

New energy integrated company, more than 10 years experience in PV industry, having complete supply chain for solar modules, inverters and energy storage products.

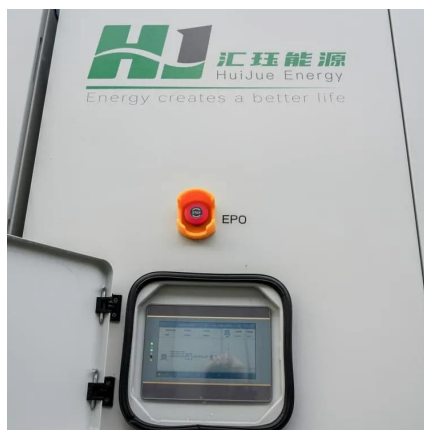
[Request Quote](#)



LONGi Launches Revolutionary Hi-MO X6 Bifacial ...

Designed for versatility, the Hi-MO X6 Bifacial Dual-Glass modules cater to a wide range of PV application scenarios, such as ...

[Request Quote](#)



Double the strengths, double the benefits

Traditional solar panels typically feature a glass front and a polymer backsheet. In contrast, double glass modules replace the ...

[Request Quote](#)



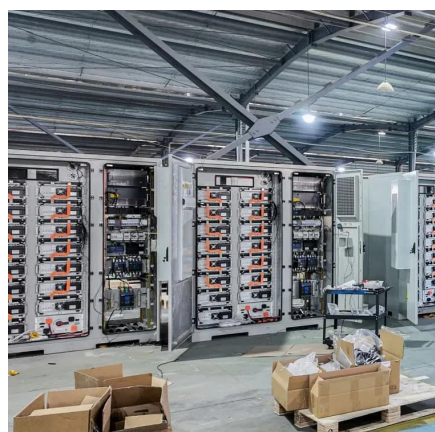
Longi HiMO X10 Explorer 645W 640W



635W 630W Double Glass ...

A: The double-glass construction and IP68-rated junction box make the Longi HiMO X10 Explorer highly durable, resistant to dust, moisture, and extreme weather conditions.

[Request Quote](#)



Bangi Double-Sided Solar Panels Boost Efficiency Cut Energy Costs

Discover how Bangi double-sided solar panels capture sunlight from both sides, delivering 30% more efficiency than traditional models. This article explores their technology, real-world ...

[Request Quote](#)

Longi Bifacial Dual Glass Pv Module Solar Panel 575W Mono Double Glass

New energy integrated company, more than 10 years experience in PV industry, having complete supply chain for solar modules, inverters and energy storage products.

[Request Quote](#)



[LONGi's new bifacial module uses thicker glass to ...](#)

LONGi has launched a new solar panel designed for durability and reliability in hail and windstorms. The Hi-MO 5 Ice-Shield module is a ...

[Request Quote](#)

Longi Photovoltaic Double Glass



Transparent Solar Modules ...

We deliver the world's most complete and cost-effective solar PV solutions. Our in-house engineering and product development ensure that every solar PV system manufactured ...

[Request Quote](#)



LONGi Launches Revolutionary Hi-MO X6 Bifacial Dual-Glass Modules

LONGi is delighted to unveil its groundbreaking Hi-MO X6 Bifacial Dual-Glass solar modules during the 19th China (Jinan) International Solar Energy Utilization Conference.

[Request Quote](#)

Double the strengths, double the benefits

Traditional solar panels typically feature a glass front and a polymer backsheet. In contrast, double glass modules replace the polymer layer with another glass sheet, creating a ...

[Request Quote](#)





Contact Us

For catalog requests, pricing, or partnerships, please visit:

<https://www.energyinnovationday.pl>

Phone: +48 22 335 1273

Email: info@energyinnovationday.pl

Scan the QR code to contact us via WhatsApp.

