



# Ashgabat BMS battery management control system enterprise





## Overview

---

What is a BMS master controller?

Data is sent to a BMS Master Controller, which aggregates and analyzes the information. Battery Management Unit (BMU): The Battery Management Unit (BMU) is a key component in a Battery Management System (BMS) responsible for monitoring and measuring critical parameters of the entire battery pack or its individual cells.

What is the architecture of intelligent battery management system (IBMS)?

The overall architecture of the proposed IBMS is illustrated in Fig. 3. To delve into the multi-layer hierarchy of this intelligent BMS, it consists of three components: end, edge, and cloud. Fig. 3 Comprehensive architecture of the intelligent battery management system (IBMS) illustrating real-time multilayer (end-edge-cloud) communication.

What is a battery management system (BMS)?

Received 5th September 2024 , Accepted 8th January 2025 The widespread adoption of electric vehicles (EVs) and large-scale energy storage has necessitated advancements in battery management systems (BMSs) so that the complex dynamics of batteries under various operational conditions are optimised for their efficiency, safety, and reliability.

What are the components of a smart battery management system?

Active communication is maintained among the reconfigurable battery pack, smart BMS, user, and charge devices and stations for enhanced battery management. The overall architecture of the proposed IBMS is illustrated in Fig. 3. To delve into the multi-layer hierarchy of this intelligent BMS, it consists of three components: end, edge, and cloud.



## Ashgabat BMS battery management control system enterprise



### **An intelligent battery management system (BMS) with end-edge ...**

The framework involves three components: the battery system, end BMS, and cloud BMS, where simple data processing occurs in the end BMS, and complex processing takes place in the ...

[Request Quote](#)

### [Ashgabat BMS Battery Management Monitoring System ...](#)

Discover how Ashgabat's innovative BMS architecture optimizes battery performance across industries. This deep-dive explores system design principles, real-world applications, and ...

[Request Quote](#)



### [An intelligent battery management system \(BMS\) ...](#)

The framework involves three components: the battery system, end BMS, and cloud BMS, where simple data processing occurs in the end BMS, ...

[Request Quote](#)

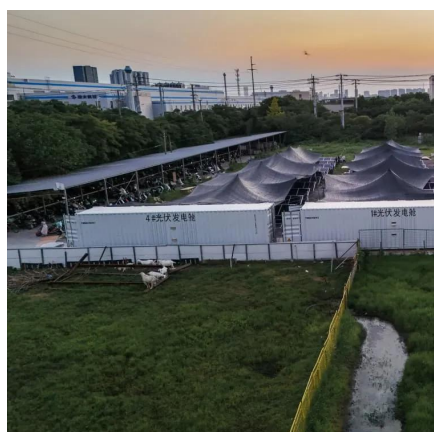


### [Whitepaper: Understanding Battery Management Systems ...](#)

This whitepaper provides an in-depth look at Battery Management Systems, exploring their architecture, key features, and how they contribute to battery safety and longevity.



[Request Quote](#)



### [Advanced Battery Management System for Electric Vehicles](#)

This book focuses on critical BMS techniques, such as battery modeling; estimation methods for state of charge, state of power and state of health; battery charging strategies; active and ...

[Request Quote](#)

### [Review of Battery Management Systems \(BMS\) Development ...](#)

It is recommended that a technical review of the BMS be performed for transportation electrification and large-scale (stationary) applications. A comprehensive ...

[Request Quote](#)



### [Battery Management Systems \(BMS\): A Complete Guide](#)

In this article, we will discuss battery management systems, their purpose, architecture, design considerations for BMS, and future trends. Ask questions if you have any ...

[Request Quote](#)

### [Battery Management System \(BMS\)](#)



## [Detailed ...](#)

Battery Management System (BMS) is the "intelligent manager" of modern battery packs, widely used in fields such as electric ...

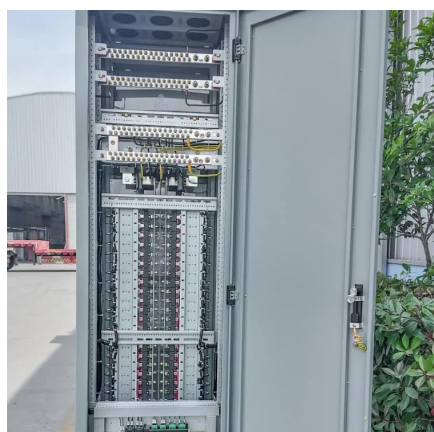
[Request Quote](#)



## [Ashgabat BMS battery management control system enterprise](#)

To ensure safe and efficient operation and long-term vitality of the battery over thousands of charging cycles, all of these battery-electric vehicles (BEVs) need a battery management ...

[Request Quote](#)



## [Technical Deep Dive into Battery Management System BMS](#)

A Battery Management System (BMS) is an electronic system designed to monitor, manage, and protect a rechargeable battery (or battery pack). It plays a crucial role in ensuring ...

[Request Quote](#)



## [Battery Management System \(BMS\) Detailed Explanation: ...](#)

Battery Management System (BMS) is the "intelligent manager" of modern battery packs, widely used in fields such as electric vehicles, energy storage stations, and consumer ...

[Request Quote](#)



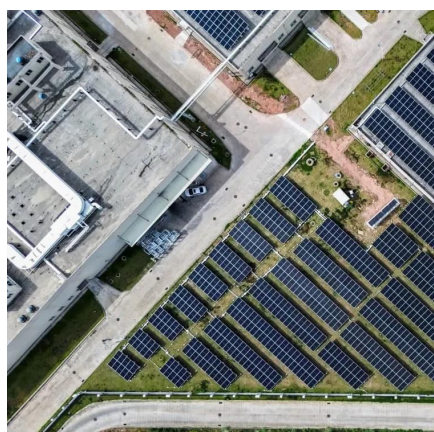
## **Ashgabat BMS Battery Management**



## Systems Powering Efficient ...

This article explores how Ashgabat's advanced BMS technology addresses critical challenges in renewable energy integration, industrial applications, and smart grid management.

[Request Quote](#)



## [Advanced Battery Management System for Electric ...](#)

This book focuses on critical BMS techniques, such as battery modeling; estimation methods for state of charge, state of power and state of health; ...

[Request Quote](#)

## [Battery Management Systems \(BMS\): A Complete ...](#)

In this article, we will discuss battery management systems, their purpose, architecture, design considerations for BMS, and future ...

[Request Quote](#)





## Contact Us

---

For catalog requests, pricing, or partnerships, please visit:

<https://www.energyinnovationday.pl>

Phone: +48 22 335 1273

Email: [info@energyinnovationday.pl](mailto:info@energyinnovationday.pl)

Scan the QR code to contact us via WhatsApp.

