

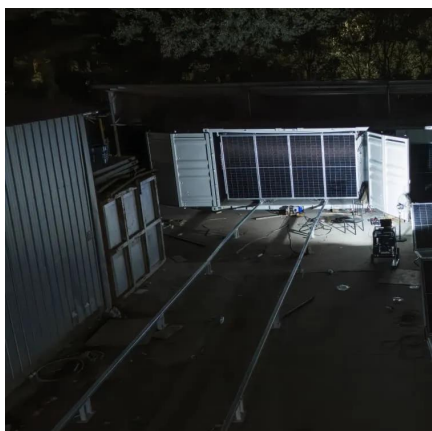


# Are lithium batteries with BMS safe





## Are lithium batteries with BMS safe



### The Role of the BMS in Modern Lithium Batteries - Why It Matters?

Without a properly functioning BMS, even a physically intact lithium battery can become unusable. Many of the issues that consumers face--such as a battery that won't ...

[Request Quote](#)

### Understanding Battery Management Systems (BMS) in Lithium Batteries

Think of the BMS as a computerized gatekeeper, making sure your battery only operates within safe conditions. If those conditions aren't met, the BMS steps in and disconnects the battery ...

[Request Quote](#)



### [Do I Need a BMS for Lithium-Ion Batteries? Benefits and ...](#)

Overall, a BMS enhances battery reliability and safety during charging and discharging operations. Without a BMS, lithium-ion batteries can overcharge or over ...

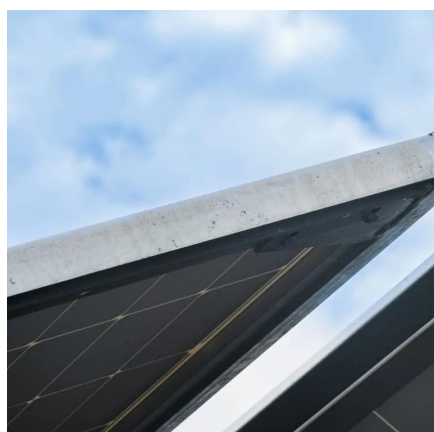
[Request Quote](#)

### [4 lithium battery safety factors , Factor 2: BMS](#)

Using a lithium battery BMS from the same manufacturer as the battery itself helps them work well together and lowers the risk of fire. By ensuring functional lithium battery safety ...



[Request Quote](#)



### [The Role of the BMS in Modern Lithium Batteries - ...](#)

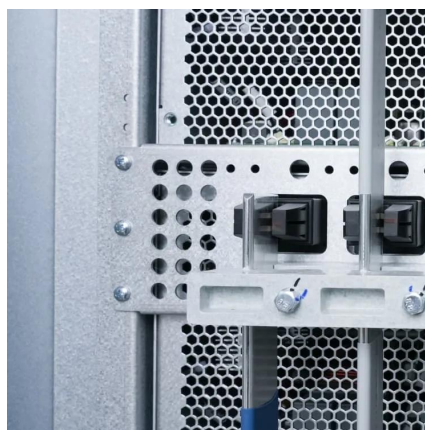
Without a properly functioning BMS, even a physically intact lithium battery can become unusable. Many of the issues that consumers ...

[Request Quote](#)

### [What is BMS on a Lithium Battery and Why Is It So Important](#)

Each is essential to keeping your lithium batteries safe and performing at their best. 1. Monitoring -- Real-Time Health Check. The BMS performs continuous monitoring of ...

[Request Quote](#)



### [BMS for Lithium-Ion Batteries: The Essential Guide ...](#)

A: Operating lithium-ion batteries without proper BMS protection is extremely dangerous and not recommended. While basic ...

[Request Quote](#)



### [BMS for Lithium-Ion Battery: Essential](#)



## [Guide](#)

Discover the crucial role of a BMS for lithium-ion batteries in ensuring safety, performance, and longevity. Learn about standard vs smart BMS options.

[Request Quote](#)



## [What Is BMS on a Lithium Battery? A Complete ...](#)

Every cell in a lithium battery has a safe voltage range--typically 2.5-4.2 V for lithium-ion and 2.0-3.65 V for LiFePO4. ...

[Request Quote](#)

## **BMS for Lithium-Ion Batteries: The Essential Guide to Battery**

A: Operating lithium-ion batteries without proper BMS protection is extremely dangerous and not recommended. While basic protection circuits exist, they lack the ...

[Request Quote](#)



## [BMS for Lithium-Ion Battery: Essential Guide](#)

Discover the crucial role of a BMS for lithium-ion batteries in ensuring safety, performance, and longevity. Learn about standard vs ...

[Request Quote](#)

## [What is BMS on a Lithium Battery and](#)



## [Why Is It So ...](#)

Each is essential to keeping your lithium batteries safe and performing at their best. 1. Monitoring -- Real-Time Health Check. The ...

[Request Quote](#)



## **BMS for Lithium-Ion Batteries: Complete Guide to Battery Safety**

Modern BMS technology represents the foundation of safe, reliable lithium-ion battery operation. Whether powering electric vehicles or storing renewable energy, these ...

[Request Quote](#)

## [4 lithium battery safety factors , Factor 2: BMS](#)

Using a lithium battery BMS from the same manufacturer as the battery itself helps them work well together and lowers the risk of fire. ...

[Request Quote](#)



## [Understanding Battery Management Systems ...](#)

Think of the BMS as a computerized gatekeeper, making sure your battery only operates within safe conditions. If those conditions aren't met, the ...

[Request Quote](#)

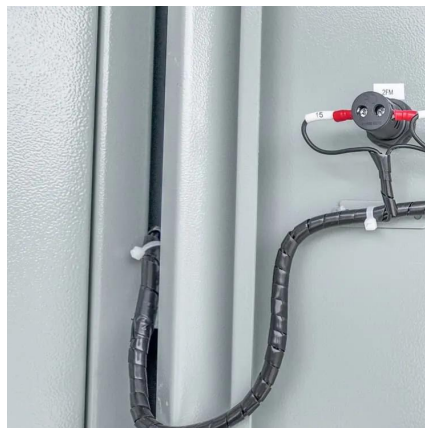
## [Top 5 Bms For Lithium Battery: Boost](#)



## [Performance & Safety](#)

In lithium battery applications, a BMS is crucial. It enhances battery life and performance. Without it, batteries may fail or even become dangerous. Why is a BMS ...

[Request Quote](#)



## **What Is BMS on a Lithium Battery? A Complete Guide to Its Role**

Every cell in a lithium battery has a safe voltage range--typically 2.5-4.2 V for lithium-ion and 2.0-3.65 V for LiFePO4. The BMS ensures no cell goes over or under these ...

[Request Quote](#)



## Contact Us

---

For catalog requests, pricing, or partnerships, please visit:

<https://www.energyinnovationday.pl>

Phone: +48 22 335 1273

Email: [info@energyinnovationday.pl](mailto:info@energyinnovationday.pl)

Scan the QR code to contact us via WhatsApp.

