



# About the obstacles to the construction of wind and solar complementary solar container communication stations





## Overview

---

The paper, authored by Dr. Paul Komor of the University of Colorado at Boulder, explains these challenges, explores policy options for addressing them, and describes the implications of future scenarios that entail significantly higher levels of electricity generation from wind .

The paper, authored by Dr. Paul Komor of the University of Colorado at Boulder, explains these challenges, explores policy options for addressing them, and describes the implications of future scenarios that entail significantly higher levels of electricity generation from wind .

With the global demand for renewable energy on the rise, solar and wind farms are expanding rapidly to support ambitious sustainability goals. Yet, the journey to successful deployment can present challenges. From grid capacity constraints to supply chain challenges, construction companies face.

The intermittent nature of wind and solar sources poses a complex challenge to grid operators in forecasting electrical energy production. Numerous studies have shown that the combination of sources with complementary characteristics could make a significant contribution to mitigating the.

Solar photovoltaics (PV) and wind power have been growing at an accelerated pace, more than doubling in installed capacity and nearly doubling their share of global electricity generation from 2018 to 2023. This report underscores the urgent need for timely integration of solar PV and wind capacity.

Wind and solar power could become a major source of electricity for the United States, but only if the nation adopts new policies that promote renewable energy and that place a price on carbon. The report cites figures showing that renewable energy sources currently provide only a small fraction of.

Wind-solar hybrid systems are becoming increasingly popular as a means of counteracting the intermittency issues associated with renewable energy sources. By combining wind and solar power, these systems leverage the complementary nature of these resources to create a more stable and reliable. What are the constraints of a pure wind or solar plant?



Constraints (9) and (10) allow pure wind or solar plants to be solutions varying from zero to the nominal HPU Power. Constraints (11) and (12) consider that the power produced by each source at a given moment must be equal to or higher than zero and less than the total installed capacity.

Is there a complementarity evaluation method for wind and solar power?

Han et al. have proposed a complementarity evaluation method for wind, solar, and hydropower by examining independent and combined power generation fluctuation. Hydropower is the primary source, while wind and solar participation are changed in each scenario to improve power system operation.

Does operational interdependence affect the planning and scheduling of power plants?

6. Conclusions and implications The operational interdependence between power plants plays a significant role in the planning and scheduling of operations in the SEB, requiring decision-makers to consider the effects of complementarity between the different sources, a task of significant complexity.

Can an existing wind power plant be hybridized to deploy an ahu?

Considering the strategy of hybridizing an existing power plant to deploy an AHU, the following methodology proposes an approach to determine the additional nominal capacity of solar power to be associated with an existing wind power plant without revising the value of the previously contracted ATSU, optimizing the usage contract.



## About the obstacles to the construction of wind and solar complemen



### [Wind and Solar Electricity: Challenges and Opportunities](#)

The paper, authored by Dr. Paul Komor of the University of Colorado at Boulder, explains these challenges, explores policy options for addressing them, and describes the implications of ...

[Request Quote](#)

### **Overcoming Common Challenges in Solar and Wind Farm Construction ...**

From grid capacity constraints to supply chain challenges, construction companies face numerous hurdles that can delay timelines and inflate costs. The key to overcoming these challenges lies ...

[Request Quote](#)



### **A review on the complementarity between grid-connected solar ...**

The literature survey revealed 41 papers that were analyzed in the manuscript. The combined use of wind and solar in many places results in a smoother power supply, which is ...

[Request Quote](#)

### **A review on the complementarity between grid-connected solar and wind**

The literature survey revealed 41 papers that were analyzed in the manuscript. The combined use of wind and solar in many places results in a smoother power supply, which is ...



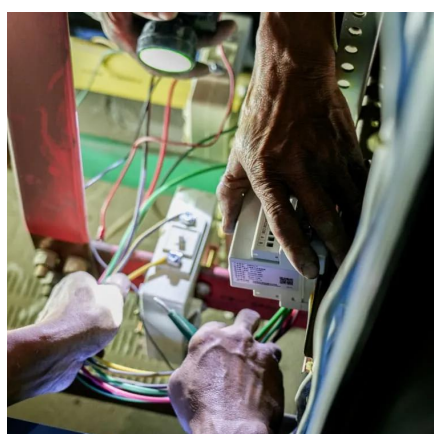
[Request Quote](#)



### [Integrating Solar and Wind - Analysis](#)

However, should countries fail to implement integration measures in line with a scenario where they achieve their climate and energy pledges, the global power sector could ...

[Request Quote](#)



## Emerging Issues and Challenges in Integrating of Solar and Wind

The study contemplates three scenarios: the integration of solar panels and batteries, the combination of wind turbines and batteries, and standalone wind turbines.

[Request Quote](#)



### [Integrating Solar and Wind - Analysis](#)

However, should countries fail to implement integration measures in line with a scenario where they achieve their climate and ...

[Request Quote](#)



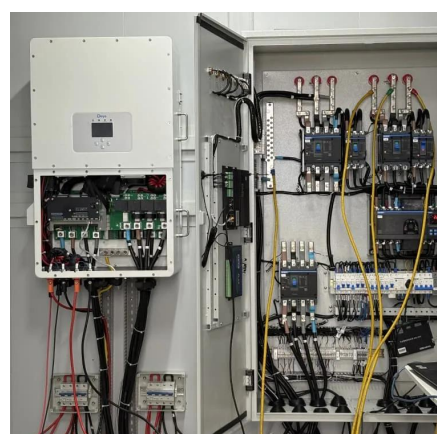
## Exploring complementary effects of



## solar and wind power generation

This work proposes a stochastic simulation model of renewable energy generation that explores several complementary effects between wind and photovoltaic resources in ...

[Request Quote](#)



## [Wind-Solar Hybrid Systems: How to Balance Intermittency with](#)

Wind-solar hybrid systems are becoming increasingly popular as a means of counteracting the intermittency issues associated with renewable energy sources. By ...

[Request Quote](#)

## [Optimizing wind-solar hybrid power plant configurations by](#)

This variability in the availability of wind or solar generation over time is a characteristic called intermittency, demanding the availability of primary reserves, solutions for ...

[Request Quote](#)



## [Matching Optimization of Wind-Solar Complementary Power ...](#)

The intermittency, randomness and volatility of wind power and photovoltaic power generation bring trouble to power system planning. The capacity configuration.

[Request Quote](#)

## [Wind and Solar Electricity: Challenges and](#)



...

The paper, authored by Dr. Paul Komor of the University of Colorado at Boulder, explains these challenges, explores policy options for ...

[Request Quote](#)



## [Overcoming Common Challenges in Solar and Wind Farm ...](#)

From grid capacity constraints to supply chain challenges, construction companies face numerous hurdles that can delay timelines and inflate costs. The key to overcoming these challenges lies ...

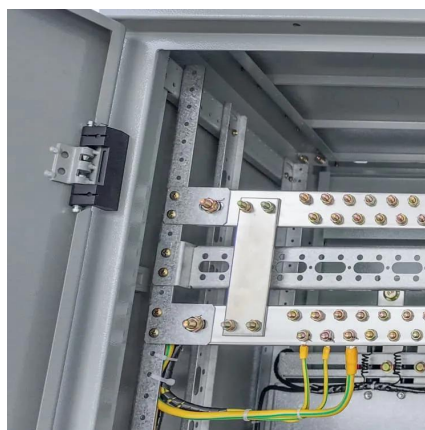
[Request Quote](#)



## **Design of a Wind-Solar Complementary Power Generation Device**

In order to improve the utilization efficiency of wind and photovoltaic energy resources, this paper designs a set of wind and solar complementary power generat

[Request Quote](#)





## Contact Us

---

For catalog requests, pricing, or partnerships, please visit:

<https://www.energyinnovationday.pl>

Phone: +48 22 335 1273

Email: [info@energyinnovationday.pl](mailto:info@energyinnovationday.pl)

Scan the QR code to contact us via WhatsApp.

