



ACS800 inverter cabinet





ACS800 inverter cabinet



[ABB ACS800 MANUAL Pdf Download , ManualsLib](#)

This manual applies to line-side converter modules and generator-side converter modules in product series ACS800-67LC, ACS800-77LC, ACS800-87LC and ACS800N-87LC.

[Request Quote](#)

[EN / ACS800-37 Drives 55 to 2700 kW \(75 to 3000 hp\) ...](#)

The cabinet is to be fastened to the floor by using clamps along the edge of the cabinet bottom, or by bolting the cabinet to the floor through the holes inside.

[Request Quote](#)



50 Inverter ACS800 Hardware

The ACS800 Hardware Manual provides comprehensive information on the ACS800-107 Cabinet-built Inverter Units, detailing specifications from 1.5 to 5340 kW. It includes sections on ...

[Request Quote](#)

ABB ACS800 INVERTER HARDWARE MANUAL

Inverter module hardware The ACS800-104 range of inverter modules contains components for building the inverter unit (s) of a common DC ...

[Request Quote](#)



[EN / ACS800-07 \(+V992\) drives \(500-2800 kW\) hardware ...](#)

Contains the inverter unit control board with I/O terminals, and provides space for standard and optional electrical equipment. Accessible by opening the swing-out frame: auxiliary voltage ...

[Request Quote](#)

[EN / ACS800-04/U4 Drive Modules Hardware Manual \(0.55 ...](#)

The ACS800-04/U4 (frame sizes R2 to R6) is an IP20 drive module for controlling AC motors. It is to be installed into a cabinet by the customer with wall fastening.

[Request Quote](#)



[Cabinet construction. ABB ACS 800 Series, ACS800-104](#)

This manual provides detailed information on the hardware components, installation, electrical connections, and maintenance procedures for the ACS800-104 inverter modules, covering ...

[Request Quote](#)



[ABB ACS800 Cabinet Installation And](#)



[Operating Instruction](#)

It is to be installed into a cabinet by the customer with base or wall fastening. The input cable terminals are located at the top of the unit whereas the motor cable terminals are located at ...

[Request Quote](#)



[Regenerative AC drive, cabinet-built](#)

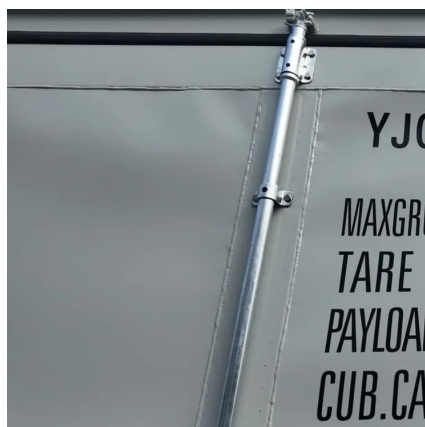
The ACS800-17 offers you a complete regenerative drive in a single, compact cabinet-built package. The drive includes everything that is needed for regenerative operation, including ...

[Request Quote](#)

[EN / ACS800-17 Drives \(55 to 2500 kW / 75 to 2800 hp\) ...](#)

The ACS800-17 is a four-quadrant, cabinet-mounted drive for controlling asynchronous AC induction motors and generators, and permanent magnet synchronous motors and generators.

[Request Quote](#)



[ABB ACS800 INVERTER HARDWARE MANUAL , ManualsLib](#)

Inverter module hardware The ACS800-104 range of inverter modules contains components for building the inverter unit (s) of a common DC bus system drive. The chapter ACS800-104 ...

[Request Quote](#)



Contact Us

For catalog requests, pricing, or partnerships, please visit:

<https://www.energyinnovationday.pl>

Phone: +48 22 335 1273

Email: info@energyinnovationday.pl

Scan the QR code to contact us via WhatsApp.

