



# 600w single glass solar panel specifications and dimensions





## Overview

---

STC: Irradiance 1000W/m<sup>2</sup>, Cell Temperature 25°C, Air Mass AM1.5. \*Measuring tolerance: ±3%. Power Bifaciality: 70±5%. NOCT: Irradiance at 800W/m<sup>2</sup>, Ambient Temperature 20°C, Wind Speed 1m/s. ed connector. CAUTION: READ SAFETY AND INSTALLATION INSTRUCTIONS BEFORE USING THE.

STC: Irradiance 1000W/m<sup>2</sup>, Cell Temperature 25°C, Air Mass AM1.5. \*Measuring tolerance: ±3%. Power Bifaciality: 70±5%. NOCT: Irradiance at 800W/m<sup>2</sup>, Ambient Temperature 20°C, Wind Speed 1m/s. ed connector. CAUTION: READ SAFETY AND INSTALLATION INSTRUCTIONS BEFORE USING THE.

Founded in 1997, Trina Solar is the world's leading total solution provider for solar energy. With local presence around the globe, Trina Solar is able to provide exceptional service to each customer in each market and deliver our innovative, reliable products with the backing of Trina as a strong.

Meteor series represents our latest advancement in photovoltaic technology: the N-type TOPCon PV module. These modules, equipped with TOPCon solar cells, showcase superior bifacial properties in comparison to PERC solar cells, with a power range of 415W to 725W, resulting in an enhanced energy.

Ø 25 mm at 23 m/s 2400 Pa/ 244 kg/ m<sup>2</sup> 5400 Pa/ 550 kg/ m<sup>2</sup> Operating temperature Temp. coefficient of P<sub>max</sub> Temp. coefficient of V<sub>oc</sub> Temp. coefficient of I<sub>sc</sub> Nom. operating temp. NOCT Nominal Max. Power Nominal Max. Power The specifications and characteristics contained in this datasheet may deviate slightly.

Too many choices of suppliers and products?

Let our team find suppliers for you, for free! Too many choices of suppliers and products?

Let our team find suppliers for you, for free! Let goes come to you instead of running around requesting quotes.

STC: Irradiance 1000W/m<sup>2</sup>, Cell Temperature 25°C, Air Mass AM1.5. \*Measuring tolerance: ±3%. Power Bifaciality: 70±5%. NOCT: Irradiance at 800W/m<sup>2</sup>, Ambient Temperature 20°C, Wind Speed 1m/s. \*Please refer to regional datasheet for speci



ed connector. CAUTION: READ SAFETY AND INSTALLATION INSTRUCTIONS.

The 600W solar panel represents a mature and reliable solar technology in 2025, offering exceptional power output that can transform how we approach renewable energy systems. These powerful panels deliver significantly more electricity per unit compared to traditional lower-wattage options, making.



## 600w single glass solar panel specifications and dimensions



### AE ME-120 580-600W Single Glass

They feature glass on both sides, with an anti-reflective coating on the ...

[Request Quote](#)

### [600 Watt Solar Panel Insights , Anmak Solar](#)

Here are some typical specifications for 600-watt solar panels: These panels have special design features. One important feature is bifacial technology. This allows the panels to ...

[Request Quote](#)



### AE ME-120BS 580W-600W

The specifications and characteristics contained in this datasheet may deviate slightly from our actual products due to the product developments and uncertainty of measurement devices. ...

[Request Quote](#)

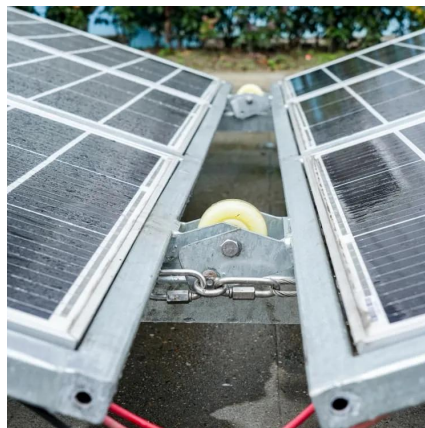


### 600 Watt Solar panels for sale , Prices, dimensions, weight, ...

600 Watt Solar panels' range of prices, dimensions, sizes, voltage output, specifications datasheets Ranges of information Voltage: 34.3V ~ 67.2V Amp: 8.93A ~ 17.5A



[Request Quote](#)



### [600 Watt Solar Panels Technical Specs & Installation](#)

Solar panel specifications are essential information about the performance and characteristics of solar panels that affect the decision-making process. Here are some key ...

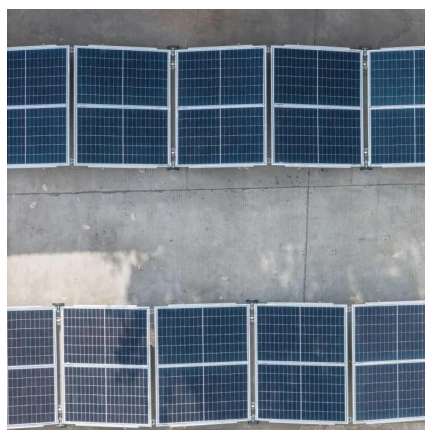
[Request Quote](#)



### [600W Datasheet\\_Vortex\\_DEG20C.20\\_EN\\_2020\\_PA2\\_web](#)

Encapsulant material Back Glass POE/EVA 2.0 mm (0.08 inches), Heat Strengthened Glass (White Grid Glass) Frame 40mm(1.57 inches) Anodized Aluminium Alloy J-Box IP 68 rated

[Request Quote](#)



### **AE ME-120 580-600W Single Glass**

They feature glass on both sides, with an anti-reflective coating on the front and float glass on the back. These modules operate efficiently in temperatures from -40°C to 85°C, with a low ...

[Request Quote](#)



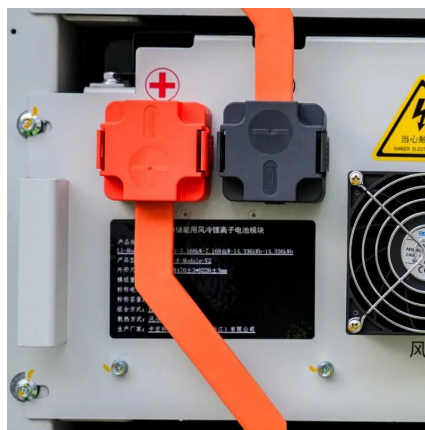
### [600w single-glass solar panel](#)



## [specifications and dimensions](#)

600W Single Glass Photovoltaic Panel Specifications and Dimensions Here''s where single glass construction shines: the typical 600W panel measures 2278×1134×35mm, combining large ...

[Request Quote](#)



## **600W Solar Panel Guide 2025: Performance, Installation & Best ...**

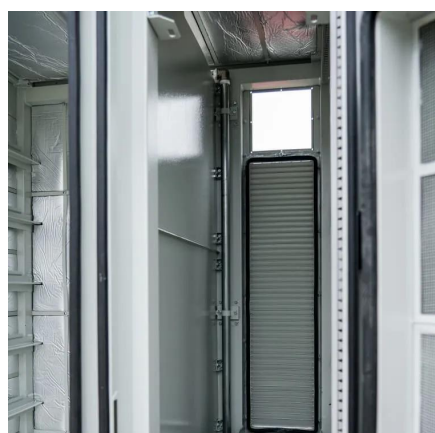
Complete guide to 600W solar panels: real-world performance data, installation tips, top brands, and system requirements. Expert testing and reviews included.

[Request Quote](#)

## [JA 600Watt 610Watt 625 Watt Bifacial Mono Solar Panel](#)

optimized mass-production process and materials control. has better reliability and lower LID/LETID. and snow load (5400 Pascal).

[Request Quote](#)



## **600W**

With local presence around the globe, Trina Solar is able to provide exceptional service to each customer in each market and deliver our innovative, reliable products with the backing of Trina ...

[Request Quote](#)



## Contact Us

---

For catalog requests, pricing, or partnerships, please visit:

<https://www.energyinnovationday.pl>

Phone: +48 22 335 1273

Email: [info@energyinnovationday.pl](mailto:info@energyinnovationday.pl)

Scan the QR code to contact us via WhatsApp.

