



5g base station power consumption stops at 9 o'clock





Overview

Can 3GPP reduce base station energy consumption in 5G NR BS?

Aiming at minimizing the base station (BS) energy consumption under low and medium load scenarios, the 3GPP recently completed a Release 18 study on energy saving techniques for 5G NR BSs . A broad range of techniques was evaluated in terms of the obtained network energy saving (NES) gain and their impact to the user-perceived throughput (UPT).

Is 5G base station power consumption accurate?

esan@huawei.com Abstract—The energy consumption of the fifth generation (5G) of mobile networks is one of the major concerns of the telecom industry. However, there is not currently an accurate and tractable approach to evaluate 5G base stations (BSs) power consumption. In this article, we pr.

How does mobile data traffic affect the energy consumption of 5G base stations?

The explosive growth of mobile data traffic has resulted in a significant increase in the energy consumption of 5G base stations (BSs).

What is 5G base station?

1. Introduction 5G base station (BS), as an important electrical load, has been growing rapidly in the number and density to cope with the exponential growth of mobile data traffic . It is predicted that by 2025, there will be about 13.1 million BSs in the world, and the BS energy consumption will reach 200 billion kWh .



5g base station power consumption stops at 9 o clock



Final draft of deliverable D.WG3-02-Smart Energy Saving of ...

When the base station traffic increases, the power amplifier module immediately enters the working state. In order to improve the power saving efficiency, symbol aggregation shutdown ...

[Request Quote](#)

[Power consumption based on 5G communication](#)

This paper proposes a power control algorithm based on energy efficiency, which combines cell breathing technology and base station sleep technology to reduce base station energy ...

[Request Quote](#)



[Why does 5g base station consume so much ...](#)

Why does the base station consume electricity? The following presents the results of professional frontline testing, with the power ...

[Request Quote](#)



A Power Consumption Model and Energy Saving Techniques for 5G ...

Aiming at minimizing the base station (BS) energy consumption under low and medium load scenarios, the 3GPP recently completed a Release 18 study on energy savi



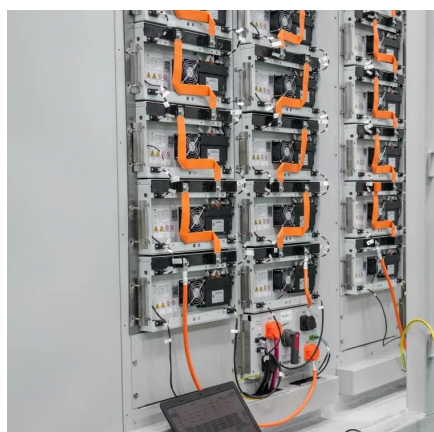
[Request Quote](#)



[Modelling the 5G Energy Consumption using Real-world ...](#)

To address this, we propose a novel deep learning model for 5G base station energy consumption estimation based on a real-world dataset. Unlike existing methods, our approach integrates ...

[Request Quote](#)



Why does 5g base station consume so much power and how to ...

Why does the base station consume electricity? The following presents the results of professional frontline testing, with the power consumption of Huawei and ZTE 5G base ...

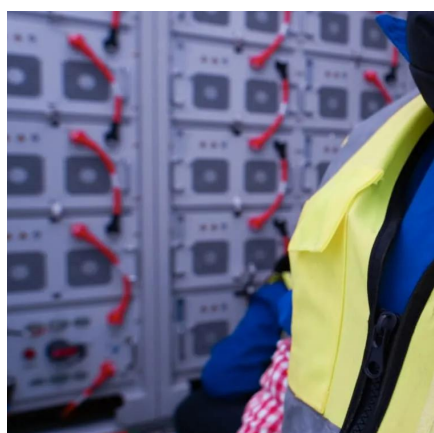
[Request Quote](#)



[Machine Learning and Analytical Power Consumption ...](#)

When symbol shutdown is activated, the AAU switches off the MCPAs, and its power consumption is reduced to the sum of the baseline power consumption, P_0 , the baseband ...

[Request Quote](#)



[What are the power delivery challenges](#)



[with 5G to ...](#)

The two primary power delivery challenges with 5G new radio (NR) are improving operational efficiency and maximizing sleep time.

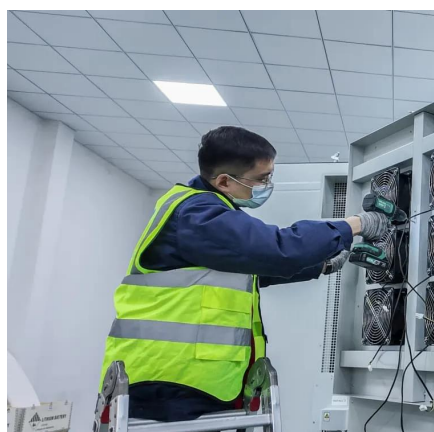
[Request Quote](#)



Energy Efficiency for 5G and Beyond 5G: Potential, Limitations, ...

Energy efficiency assumes it is of paramount importance for both User Equipment (UE) to achieve battery prologue and base stations to achieve savings in power and operation ...

[Request Quote](#)



[Comparison of Power Consumption Models for 5G Cellular ...](#)

This paper conducts a literature survey of relevant power consumption models for 5G cellular network base stations and provides a comparison of the models. It highlights commonly made ...

[Request Quote](#)



Energy consumption optimization of 5G base stations considering

An energy consumption optimization strategy of 5G base stations (BSs) considering variable threshold sleep mechanism (ECOS-BS) is proposed, which includes the initial ...

[Request Quote](#)



[Energy Efficiency for 5G and Beyond 5G:](#)



Potential, ...

Energy efficiency assumes it is of paramount importance for both User Equipment (UE) to achieve battery prologue and base stations ...

[Request Quote](#)



What are the power delivery challenges with 5G to maximize

The two primary power delivery challenges with 5G new radio (NR) are improving operational efficiency and maximizing sleep time.

[Request Quote](#)

A Power Consumption Model and Energy Saving Techniques for ...

Aiming at minimizing the base station (BS) energy consumption under low and medium load scenarios, the 3GPP recently completed a Release 18 study on energy savi

[Request Quote](#)





Contact Us

For catalog requests, pricing, or partnerships, please visit:

<https://www.energyinnovationday.pl>

Phone: +48 22 335 1273

Email: info@energyinnovationday.pl

Scan the QR code to contact us via WhatsApp.

