



5g base station power consumption is 70 000





Overview

How much power does a 5G station use?

The power consumption of a single 5G station is 2.5 to 3.5 times higher than that of a single 4G station. The main factor behind this increase in 5G power consumption is the high power usage of the active antenna unit (AAU). Under a full workload, a single station uses nearly 3700W.

Is 5G more energy efficient than 4G?

Although the absolute value of the power consumption of 5G base stations is increasing, their energy efficiency ratio is much lower than that of 4G stations. In other words, with the same power consumption, the network capacity of 5G will be as dozens of times larger than 4G, so the power consumption per bit is sharply reduced.

Is 5G base station power consumption accurate?

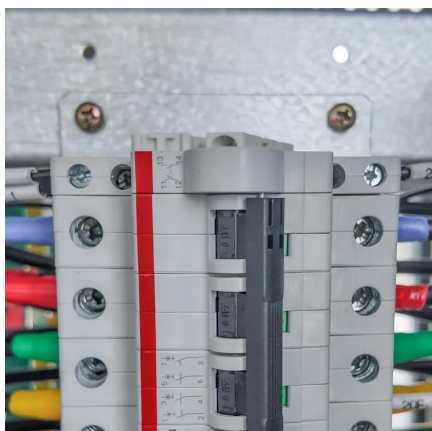
esan@huawei.com Abstract—The energy consumption of the fifth generation (5G) of mobile networks is one of the major concerns of the telecom industry. However, there is not currently an accurate and tractable approach to evaluate 5G base stations (BSs) power consumption. In this article, we pr.

How does mobile data traffic affect the energy consumption of 5G base stations?

The explosive growth of mobile data traffic has resulted in a significant increase in the energy consumption of 5G base stations (BSs).



5g base station power consumption is 70 000



[Modelling the 5G Energy Consumption using Real-world ...](#)

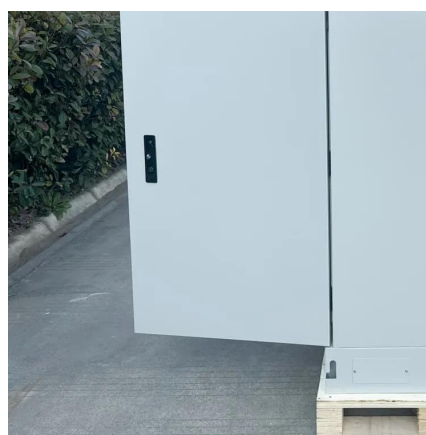
To address this, we propose a novel deep learning model for 5G base station energy consumption estimation based on a real-world dataset. Unlike existing methods, our approach integrates ...

[Request Quote](#)

[How Much Power Does 5G Base Station Consume?](#)

Have you ever wondered how much energy our hyper-connected world is consuming? 5G base stations, the backbone of next-gen connectivity, now draw 3-4 times ...

[Request Quote](#)



How much power does 5G consume?

One 5G base station is estimated to consume about as much power as 73 households (6), and 3x as much as the previous generation of base stations (5), (7). When base stations, data centers ...

[Request Quote](#)

Comparison of Power Consumption Models for 5G Cellular Network Base

In order to quantify and optimize the energy consumption of mobile networks, theoretical models are required to estimate the effect of relevant parameters on the total ...



[Request Quote](#)



[Machine Learning and Analytical Power Consumption ...](#)

roduce a new power consumption model for 5G active antenna units (AAUs), the highest power consuming component of a BS1 and in turn of a mobile network. I. particular, we present an ...

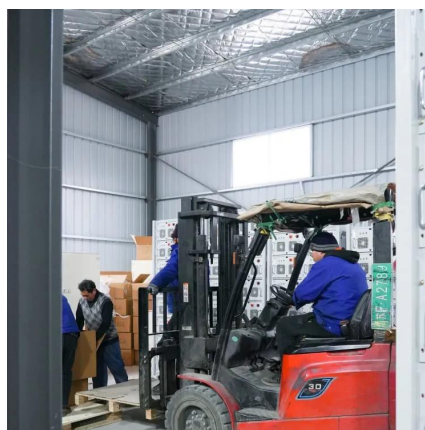
[Request Quote](#)



[Why does 5g base station consume so much ...](#)

In addition to other small modules that use electricity, the power consumption of a single 5G base station is generally around 3700 watts, ...

[Request Quote](#)



Energy consumption optimization of 5G base stations considering

An energy consumption optimization strategy of 5G base stations (BSs) considering variable threshold sleep mechanism (ECOS-BS) is proposed, which includes the initial ...

[Request Quote](#)



[Comparison of Power Consumption](#)



[Models for 5G Cellular ...](#)

In order to quantify and optimize the energy consumption of mobile networks, theoretical models are required to estimate the effect of relevant parameters on the total ...

[Request Quote](#)



[5G Base Station Power Consumption Using Machine Learning](#)

This project explores the application of machine learning and deep learning techniques to develop a predictive framework for forecasting power consumption, aiming to support energy providers ...

[Request Quote](#)

[Front Line Data Study about 5G Power Consumption](#)

The power consumption of a single 5G station is 2.5 to 3.5 times higher than that of a single 4G station. The main factor behind this increase in 5G power consumption is the high power ...

[Request Quote](#)



How much power does 5G consume?

Many Bits Per Second Takes A Lot of Electricity
5G Will only Increase Our Appetite For Data
Data-Driven Energy Consumption Sustainable
Electricity Consequences of 5G For The Environment
Currently, three percent of the world's energy demand comes from wireless communications(4). Telecom providers expect their energy costs to increase by 150-170 percent by 2026 with the advent of 5G technology, according to a study by Vertiv, a U.S. network service provider. That's almost a threefold increase compared to 4G(5). One 5G base station i



See more on jrseco dappworks

Front Line Data Study about 5G Power Consumption - DappWorks

The power consumption of a single 5G station is 2.5 to 3.5 times higher than that of a single 4G station. The main factor behind this increase in 5G power consumption is the high power ...

[Request Quote](#)



Why does 5g base station consume so much power and how to ...

In addition to other small modules that use electricity, the power consumption of a single 5G base station is generally around 3700 watts, which is about three times that of 4G ...

[Request Quote](#)



What is 5G Energy Consumption?

With 5G projected to increase capacity up to approximately 1000-fold and high frequency millimeter wave (mmWave) transmission driving exponentially higher cell density, this ...

[Request Quote](#)



Contact Us

For catalog requests, pricing, or partnerships, please visit:

<https://www.energyinnovationday.pl>

Phone: +48 22 335 1273

Email: info@energyinnovationday.pl

Scan the QR code to contact us via WhatsApp.

