



# 540 capacity solar panel size





## Overview

---

To give you an idea, a standard 540 watt solar panel is approximately 88 x 46 inches and tips the scales at around 72 pounds. Most modules with this output rating are monocrystalline and typically have at least 72 cells (144 half-cut cells).

To give you an idea, a standard 540 watt solar panel is approximately 88 x 46 inches and tips the scales at around 72 pounds. Most modules with this output rating are monocrystalline and typically have at least 72 cells (144 half-cut cells).

A PV module from ZNShine needs about 28 ft<sup>2</sup> of space, and you need only 11 of them to build a 6 kW system. The math: 28 ft<sup>2</sup> × 11 modules = 308 ft<sup>2</sup>. You save 50 ft<sup>2</sup>, enough to install two more 540 W modules. Installing 540 W solar panels is simple enough, despite their larger size compared to.

Too many choices of suppliers and products?

Let our team find suppliers for you, for free! Too many choices of suppliers and products?

Let our team find suppliers for you, for free! .

This 540W solar panels is with 182mm half cut cells. With the continuous . Our compact, 89.69 x 44.65 x 1.38-inch solar panel is easy to install and fits seamlessly into any environment. Upgrade your energy system with our powerful 540W monocrystalline solar panel. Its high-quality.

Bluebird Solar manufactures cutting-edge technology-based 540 Watt Solar Panels, delivering exceptional performance and efficiency. These solar modules are equipped with a state-of-the-art 144-cell configuration, 10BB technology, and Mono PERC cells, ensuring maximum sunlight absorption and.

HiMAX6 solar panels integrate large 210mm half-cut cells with Mono PERC technology, delivering a high power output ranging from 575W to 605W, and achieving power efficiency up to 21.65%. Enabled by Low LID Mono PERC technology, the power degradation is less than 2% in the first year and only 0.55%.



If you have a large roof or need commercial power, 540W panels give you higher output. For smaller homes or limited space, 425W panels often fit better. Solar panels comparison helps you see which size matches your goals. Think about your roof size, budget, and how much energy you need. Choose the.



## 540 capacity solar panel size



### 540 Watt Solar panels' range of prices, dimensions, sizes, voltage

540 Watt Solar panels' range of prices, dimensions, sizes, voltage output, specifications datasheets Ranges of information Voltage: 31.1V ~ 66V Amp: 8.19A ~ 17.36A

[Request Quote](#)

### [Solar Panel Size & Dimensions Guide 2025](#) [\\_Complete Specs](#)

In this comprehensive guide, you'll learn everything you need to know about solar panel sizing, from standard dimensions to weight considerations, helping you determine the ...

[Request Quote](#)



### [Bluebird 540 Watt Half Cut Solar Panels](#)

A 540W Half-Cut Solar Panel refers to a photovoltaic panel that has a power output of 540 watts and employs a "half-cut" cell design. In a half-cut design, the solar cells on the panel are ...

[Request Quote](#)

### 540 Watt Solar Panels

Size of 540 watt solar panels To give you an idea, a standard 540 watt solar panel is approximately 88 x 46 inches and tips the scales at around 72 pounds. Most modules with ...

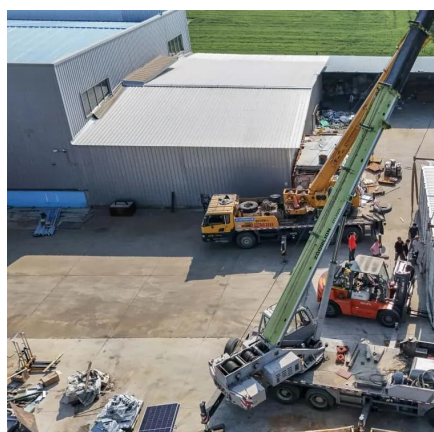
[Request Quote](#)



### [Standard Solar Panel Sizes And Wattages \(100W ...](#)

To bridge that gap of very useful knowledge needed, we have compared and averaged the sizes of 100-watt to 500-watt solar panels available on the ...

[Request Quote](#)



### [WAAREE 540Wp 144 Cells 24 Volts Mono PERC Solar Module](#)

A large-format, 144 half-cut M10 mono-PERC module delivering 540 W (STC) at ~21 % efficiency. It's built on Waaree's Tier-1, ALMM-listed production line, carries a 1500 V DC rating for long ...

[Request Quote](#)



### [WAAREE 540Wp 144 Cells 24 Volts Mono PERC ...](#)

A large-format, 144 half-cut M10 mono-PERC module delivering 540 W (STC) at ~21 % efficiency. It's built on Waaree's Tier-1, ALMM-listed production ...

[Request Quote](#)



### [Standard Solar Panel Sizes And Wattages](#)



## [\(100W-500W ...](#)

To bridge that gap of very useful knowledge needed, we have compared and averaged the sizes of 100-watt to 500-watt solar panels available on the market. The goal here is to get to the ...

[Request Quote](#)



## [540W vs 425W Solar Panels: Power Comparison, Efficiency ...](#)

You should pick a solar panel size that fits your roof, money, and how much energy you use. 540W panels are good for big roofs or business buildings. 425W panels are ...

[Request Quote](#)

## [High Efficiency Half-Cut 540W 550W 560W Mono PERC Solar ...](#)

HiMAX6 solar panels integrate large 210mm half-cut cells with Mono PERC technology, delivering a high power output ranging from 575W to 605W, and achieving power efficiency up to 21.65%.

[Request Quote](#)



## **Universal Solar , 540W-560W P Series , Solar Panel Datasheet**

Universal Solar Solar Panel Series 540W-560W P Series. Detailed profile including pictures, certification details and manufacturer PDF.

[Request Quote](#)

## [540W photovoltaic panel size](#)



## [specifications](#)

Our compact, 89.69 x 44.65 x 1.38-inch solar panel is easy to install and fits seamlessly into any environment. Upgrade your energy system with our powerful 540W ...

[Request Quote](#)



## [High Efficiency Half-Cut 540W 550W 560W Mono ...](#)

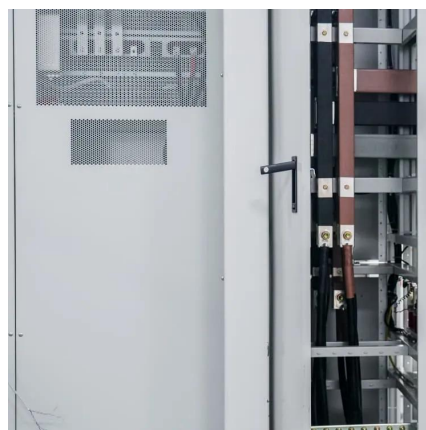
HiMAX6 solar panels integrate large 210mm half-cut cells with Mono PERC technology, delivering a high power output ranging from 575W to 605W, ...

[Request Quote](#)

## **540 Watt Solar Panels**

Size of 540 watt solar panels To give you an idea, a standard 540 watt solar panel is approximately 88 x 46 inches and tips the scales ...

[Request Quote](#)





## Contact Us

---

For catalog requests, pricing, or partnerships, please visit:

<https://www.energyinnovationday.pl>

Phone: +48 22 335 1273

Email: [info@energyinnovationday.pl](mailto:info@energyinnovationday.pl)

Scan the QR code to contact us via WhatsApp.

