



530 solar panel specifications





Overview

The SIL-530-XM solar panel features N-Type TOPCon solar cells, reducing light-induced degradation (LID) and improving overall efficiency. The bifacial design increases energy yield, while advanced anti-reflective glass coating enhances light absorption and minimizes surface losses.

The SIL-530-XM solar panel features N-Type TOPCon solar cells, reducing light-induced degradation (LID) and improving overall efficiency. The bifacial design increases energy yield, while advanced anti-reflective glass coating enhances light absorption and minimizes surface losses.

530W panels deliver optimal power density: With efficiency ratings of 20-22%, these panels generate nearly double the power of traditional 300W modules while fitting standard residential roof layouts, making them ideal for space-constrained installations in 2025. Advanced half-cell technology.

Too many choices of suppliers and products?

Let our team find suppliers for you, for free! Too many choices of suppliers and products?

Let our team find suppliers for you, for free! .

The Silfab SIL-530 XM Bifacial Solar Module is a robust solution for commercial solar installations, incorporating N-type cell technology and bifacial design. Manufactured in the USA, this 520W module offers strong performance for businesses seeking to optimize their solar energy systems. Its.

Ø 25 mm at 23 m/s 2400 Pa or 244 kg/m² 5400 Pa or 550 kg/m² Operating temperature Temp.coe cient of Pmax Temp.coe cient of Voc Temp.coe cient of Isc Nom. operating temp. NOCT Nominal Max. Power Nominal Max. Power The specifications and characteristics contained in this datasheet may deviate.

Solar Panel, Commercial Series, 530 Watt, Bifacial, 132 Half-Cell, 1500 Volt DC, 82.600 x 44.60 x 1.370 Inch (35mm Frame), 57.800 Pounds, Aluminum With Silver Finish Sign In or Register to view pricing and more. Solar Panel, Commercial Series, 530 Watt, Bifacial, 132 Half-Cell, 1500 Volt DC, 82.600.



The SIL-530-XM solar panel features N-Type TOPCon solar cells, reducing light-induced degradation (LID) and improving overall efficiency. The bifacial design increases energy yield, while advanced anti-reflective glass coating enhances light absorption and minimizes surface losses. Silfab Solar is.



530 solar panel specifications



[Silfab 530W SIL-530-XM N Type Bifacial Solar Panel](#)

The Silfab SIL-530-XM panel delivers 530 watts of power, offering high efficiency and enhanced energy yield with bifacial technology, making it ideal for commercial and utility-scale solar ...

[Request Quote](#)

JinkoSolar Tiger Pro 72HC 530-550W Solar Panel Specifications

Detailed specifications, performance metrics, and warranty information for the JinkoSolar Tiger Pro 72HC series solar panels. High-efficiency monofacial modules ranging from 530W to 550W.

[Request Quote](#)



[JinkoSolar Tiger Pro 72HC 530-550W Solar Panel ...](#)

Detailed specifications, performance metrics, and warranty information for the JinkoSolar Tiger Pro 72HC series solar panels. High-efficiency mono ...

[Request Quote](#)



[Silfab 530W SIL-530-XM N Type Bifacial Solar Panel](#)

The Silfab SIL-530-XM panel delivers 530 watts of power, offering high efficiency and enhanced energy yield with bifacial technology, making it ...

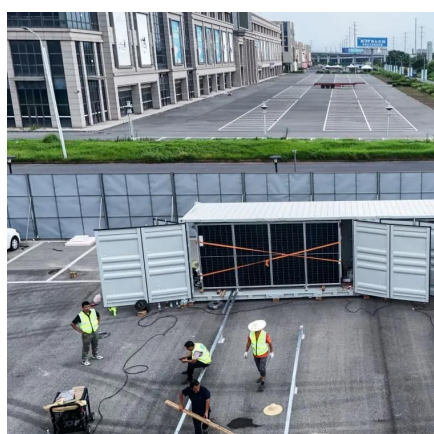
[Request Quote](#)



[530 Watt Solar Panels: Complete 2025 Buyer's ...](#)

Comprehensive guide to 530W solar panels. Compare top models from JA Solar, Jinko, Canadian Solar & more. Includes ...

[Request Quote](#)



Silfab 530W Solar Panel 132 Cell SIL-530-XM Bifacial Assembled ...

Each of the panel's 132 cells is only half the size of a traditional solar cell. This grants SIL-530-XM lower resistive losses and better shade tolerance. The efficiency of this model reaches 22.3% ...

[Request Quote](#)



AE_MD-144_530W-550W_Ver24.1.1

The specifications and characteristics contained in this datasheet may deviate slightly from our actual products due to the product developments and uncertainty of measurement devices. ...

[Request Quote](#)



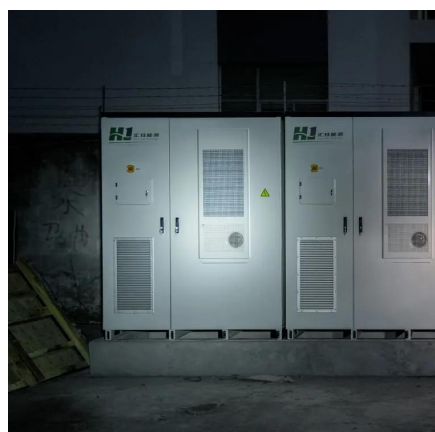
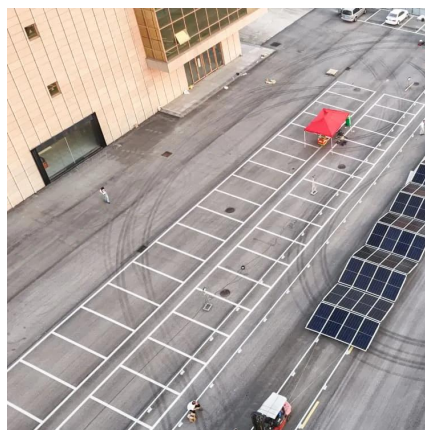
[530 Watt Solar Panels: Complete 2025](#)



[Buyer's Guide & Top ...](#)

Comprehensive guide to 530W solar panels. Compare top models from JA Solar, Jinko, Canadian Solar & more. Includes performance data, pricing, and installation tips.

[Request Quote](#)



[Silfab SIL-530 XM Bifacial , 530W Commercial Panel](#)

Discover the Silfab SIL-530 XM Bifacial Solar Panel. 530W panel with N-type cell technology for commercial projects. US-made, 25-year warranty, 22.3% efficiency.

[Request Quote](#)

Renpower , 530W Solar Module , Solar Panel Datasheet , ENF ...

Detailed profile including pictures, certification details and manufacturer PDF.

[Request Quote](#)



[Solar Panel, Commercial Series, 530 Watts, Bifacial](#)

Solar Panel, Commercial Series, 530 Watt, Bifacial, 132 Half-Cell, 1500 Volt DC, 82.600 x 44.60 x 1.370 Inch (35mm Frame), 57.800 Pounds, Aluminum With Silver Finish. Superior ...

[Request Quote](#)

[Topsun 530W Solar Panel Specifications](#)



Learn about the Topsun 530W solar panel. Explore solar panel efficiency, warranties and more.

[Request Quote](#)



Renpower , 530W Solar Module , Solar Panel Datasheet , ENF Panel ...

Detailed profile including pictures, certification details and manufacturer PDF.

[Request Quote](#)



Contact Us

For catalog requests, pricing, or partnerships, please visit:

<https://www.energyinnovationday.pl>

Phone: +48 22 335 1273

Email: info@energyinnovationday.pl

Scan the QR code to contact us via WhatsApp.

