



48v to 220 inverter voltage is stable





Overview

A well-matched 48v to 220v inverter ensures stable AC power for home appliances, off-grid systems, or backup setups. Look for units with low harmonic distortion, cooling fans, and remote monitoring if you plan continuous use.

A well-matched 48v to 220v inverter ensures stable AC power for home appliances, off-grid systems, or backup setups. Look for units with low harmonic distortion, cooling fans, and remote monitoring if you plan continuous use.

Simply put, it's how close the actual output voltage of the inverter is to the rated output voltage. In the case of our Inverter 48v 220v 5000w, the rated output voltage is 220V. But in real - world use, there can be some variation. The output voltage accuracy of our inverter is pretty impressive.

When choosing the best inverter 48v 220v for your energy system, prioritize models with high pure sine wave output, efficiency above 90%, robust overload protection, and compatibility with lithium or lead-acid batteries 1. A well-matched 48v to 220v inverter ensures stable AC power for home.

Choosing the right 48V DC to 220VAC inverter is essential for powering home appliances, solar off-grid systems, and recreational vehicles efficiently. These inverters convert battery-stored DC power into stable AC power suitable for household electronics. Below is a summary table featuring the.

This guide highlights top 48V DC to 220V inverters that deliver reliable pure sine wave power for off-grid, RV, truck, and solar setups. Each option integrates inverter functionality with charging capabilities to support battery banks and solar inputs. Read on to compare performance, outputs, and.

A 48V inverter is a device that converts 48 volts of direct current (DC), which is normally stored in a battery, to alternating current (AC), which is used to power common household appliances. This is critical in solar power systems because solar panels and batteries use DC power, while most.

This 3000 watt UPS inverter, 48V DC to 220V AC, optional 12V/24V/48V to 100V/110V/120V/220V/230V/240V, is an indispensable power protection gear for your home or office. With 3 kW rated power and 6 kW peak power, it is suitable for



all kinds of loads and guarantees the stable operation of your. What is a 220V power inverter?

A 220 volt power inverter converts direct current to conventional alternating current. It can be used to run electronic equipment when there is no normal power supply. Sam Stores stocks a wide range of power inverters to match your needs.

How does a 48V power inverter work?

In terms of functionality, a 48V power inverter typically consists of several key components. These include a DC input, an inverter circuit that converts DC to AC power, control electronics for regulating the output voltage and frequency, and output sockets or terminals to connect AC-powered devices.

What is the working temperature of a 48V 5000W inverter?

Working temperature of this 48V 5000W inverter between -10 °C to 50 °C. A 48V power inverter is a device used to convert direct current (DC) electrical power from a 48-volt battery or DC power source into alternating current (AC) power. In terms of functionality, a 48V power inverter typically consists of several key components.

What is a 48 watt inverter?

48V 2000W power inverter with universal socket and USB port, modified sine wave or pure sine wave output waveform are available. Option for 110V/120V or 220V/230V/240V AC 50Hz/60Hz, suitable DC to AC inverter for home use to charge TV, laptop, fans, lights and other appliances. Storage temperature of this 2000 watt inverter between -30 °C to +70 °C.



48v to 220 inverter voltage is stable



[3000 Watt UPS Power Inverter, 48VDC to 220VAC ...](#)

With 3 kW rated power and 6 kW peak power, it is suitable for all kinds of loads and guarantees the stable operation of your equipment. Adopting ...

[Request Quote](#)

What is the output voltage accuracy of the Inverter 48v 220v ...

But our inverter is equipped with advanced voltage regulation technology. It can quickly adjust and compensate for these changes, keeping the output voltage as stable as possible.

[Request Quote](#)



Best 48V DC to 220VAC Inverters for Reliable Off-Grid and Solar Power

Choosing the right 48V DC to 220VAC inverter is essential for powering home appliances, solar off-grid systems, and recreational vehicles efficiently. These inverters convert ...

[Request Quote](#)

I Tested the Amazing Power of a 48Vdc to 220Vac Inverter: ...

I tested the 48Vdc to 220Vac inverter and was amazed by its efficient and reliable performance. Say goodbye to power outages with this powerful solution!



[Request Quote](#)



Best 48V DC to 220VAC Inverters for Reliable Off-Grid and Solar ...

Choosing the right 48V DC to 220VAC inverter is essential for powering home appliances, solar off-grid systems, and recreational vehicles efficiently. These inverters convert ...

[Request Quote](#)



[3000 Watt UPS Power Inverter, 48VDC to 220VAC , Power Home](#)

With 3 kW rated power and 6 kW peak power, it is suitable for all kinds of loads and guarantees the stable operation of your equipment. Adopting pure sine wave output, waveform distortion is ...

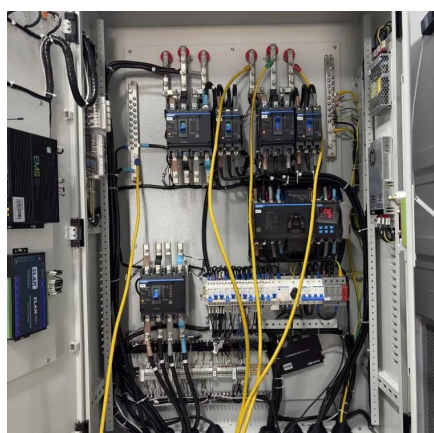
[Request Quote](#)



48V Inverter: The Ultimate Guide to Efficient and Scalable Power

A good 48V inverter doesn't just convert power--it ensures the output voltage and frequency are stable. Fluctuations in voltage or frequency can damage sensitive electronics ...

[Request Quote](#)



Ensuring 48V DC Power Quality at



BTS: Cabling, Fuses, Inverters

Power quality directly affects uptime, equipment longevity, and operating costs. This article explores three components critical to power quality--cabling, fuses, and ...

[Request Quote](#)



Pure Sine Wave Inverter, 3000W, Convert DC 12/24/48V to AC 110/220V

?Widely Use, Adaptable to Various Batteries?Simply connect the 12V/24V/48V battery to the inverter with the included cables and enjoy stable power.

[Request Quote](#)

Best 48V DC to 220V Inverters for Off-Grid Power

This guide highlights top 48V DC to 220V inverters that deliver reliable pure sine wave power for off-grid, RV, truck, and solar setups. Each option integrates inverter ...

[Request Quote](#)



48v Inverter, 48v DC to 120v/220v AC Power Inverter , inverter

The inverters convert 48 volt DC power to AC home power, available with 110V/120V or 220V/230V/240V for options. With strong durability and high efficiency, the solar power ...

[Request Quote](#)

How to Choose the Best Inverter 48V



220V for Your Power Needs

A well-matched 48v to 220v inverter ensures stable AC power for home appliances, off-grid systems, or backup setups. Look for units with low harmonic distortion, cooling fans, ...

[Request Quote](#)





Contact Us

For catalog requests, pricing, or partnerships, please visit:

<https://www.energyinnovationday.pl>

Phone: +48 22 335 1273

Email: info@energyinnovationday.pl

Scan the QR code to contact us via WhatsApp.

