

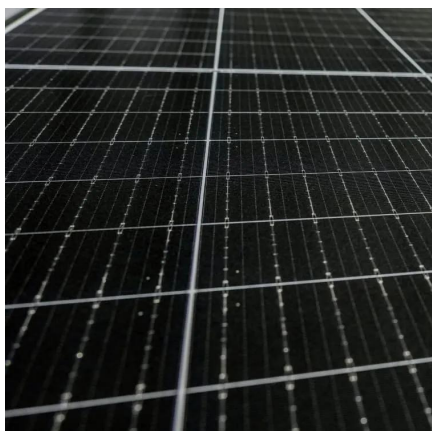


4680 cylindrical battery module pack





4680 cylindrical battery module pack



[Dissecting the Tesla 4680: A Deep Dive into the Design and](#)

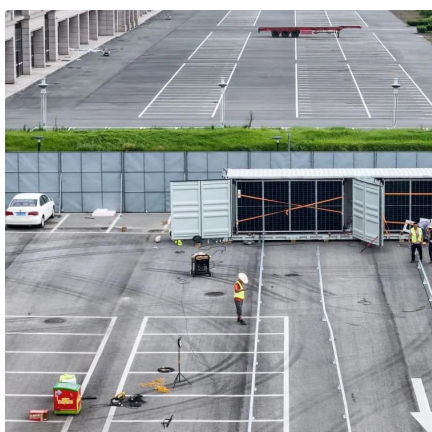
This article delves into the key design features, manufacturing intricacies, and material choices of the 4680 cell, drawing comparisons with conventional battery designs.

[Request Quote](#)

What's up with 4680 battery cells?

Introduced during Tesla's Battery Day in 2020, the 4680 cell format promises higher energy content and power capability. Four years later, this battery format has only been ...

[Request Quote](#)



Tesla 4680 Cell Generation 2

The maximum discharge power is based on the Tesla Cybertruck peak power of 845bhp and the number of cells in the 122.4 ...

[Request Quote](#)

Contrasting a BYD Blade prismatic cell and Tesla 4680 cylindrical ...

The comparative analysis of the Tesla 4680 cylindrical cell and the BYD Blade prismatic cell highlighted significant mechanical, electrical, and material differences that could ...



[Request Quote](#)



[Tesla's 4680 Battery Achieves Lowest Cost Per kWh](#)

The Cybercell - the 2nd generation of the 4680 cell- is now Tesla's lowest cost per kWh cell, meaning that it is the cheapest to produce for Tesla in terms of assembling the parts ...

[Request Quote](#)



Tesla's 4680 Battery Cell

The 4680's cylindrical strength and larger format enable it to serve dual purposes: energy storage and load-bearing structure. This structural battery concept integrates the pack ...

[Request Quote](#)



[Dissecting the Tesla 4680: A Deep Dive into the ...](#)

This article delves into the key design features, manufacturing intricacies, and material choices of the 4680 cell, drawing comparisons ...

[Request Quote](#)



[Tesla's 4680 LFP battery explained:](#)



[Cheaper, ...](#)

At the center of Tesla's battery evolution lies the 4680 battery cell--an ambitious, larger-format cylindrical cell meant to redefine energy ...

[Request Quote](#)



[Tesla's 4680 Battery Achieves Lowest Cost Per kWh](#)

The Cybercell - the 2nd generation of the 4680 cell- is now Tesla's lowest cost per kWh cell, meaning that it is the cheapest to ...

[Request Quote](#)

[Everything You Need to Know About the 4680 ...](#)

What Is the 4680 Battery? The 4680 battery is a new kind of cylindrical lithium-ion battery that is designed to power electric vehicles. It gets its ...

[Request Quote](#)



[Understanding Tesla's 4680 Battery Innovation](#)

The 4680 cell is currently being used in certain versions of the Tesla Model Y (specifically those built at Gigafactory Texas) and is the planned battery for the Tesla Cybertruck.

[Request Quote](#)

Tesla's 4680 LFP battery explained:



Cheaper, safer, and made in ...

At the center of Tesla's battery evolution lies the 4680 battery cell--an ambitious, larger-format cylindrical cell meant to redefine energy density, cost-efficiency, and vehicle design.

[Request Quote](#)



[Everything You Need to Know About the 4680 Battery](#)

What Is the 4680 Battery? The 4680 battery is a new kind of cylindrical lithium-ion battery that is designed to power electric vehicles. It gets its name from its dimensions--46 millimeters in ...

[Request Quote](#)

Tesla 4680 Cell Generation 2

The maximum discharge power is based on the Tesla Cybertruck peak power of 845bhp and the number of cells in the 122.4 kWh (usable) pack. The Tesla 4680 Cell ...

[Request Quote](#)



[Tesla's 4680 Battery Pack Design Evolution](#)

Discover how Tesla's new 4680 battery pack slashes cost, boosts range, and transforms EV design through innovative architecture.

[Request Quote](#)

Tesla's 4680 Battery Cell



The 4680's cylindrical strength and larger format enable it to serve dual purposes: energy storage and load-bearing structure. This ...

[Request Quote](#)





Contact Us

For catalog requests, pricing, or partnerships, please visit:

<https://www.energyinnovationday.pl>

Phone: +48 22 335 1273

Email: info@energyinnovationday.pl

Scan the QR code to contact us via WhatsApp.

