



385w solar panel size





Overview

Measuring 1925.2 x 992.8 mm and weighing approximately 21.8 kg each, these panels are equipped with 120 half-cut multicrystalline cells that convert solar energy into electricity with remarkable efficiency.

Measuring 1925.2 x 992.8 mm and weighing approximately 21.8 kg each, these panels are equipped with 120 half-cut multicrystalline cells that convert solar energy into electricity with remarkable efficiency.

to exceed 2% in year one and 0.58% annually from years tw erican, high-quality solar modules ensuring the highest-in-class power output and est-in-class reliability. Our product line is tailored for residential, commercial and utility applications. Every Mission Solar Energy solar modul is.

What are the dimensions of the panel?

How long is the warranty on the panel?

Which panels do you recommend for RV, marine?

Can this panel be used with a 12v system?

Can I pick up this panel from your fulfillment center to save on shipping?

How do I connect these panels?

How many panels do I need?

The MSE385SX5R PERC 66 mono-crystalline solar panel is a 66 cell solar panel with the highest power output in its class. It's high efficiency and certified reliability make it ideal for utility grid-tied installations including ground-mounted and commercial rooftop solar panel systems. Mission.

Advanced Technologies: Utilizes TOPCon cells, 210mm solar wafers, multi-busbar (MBB) technology, and half-cut cells to boost power, reduce losses, and improve



current flow. Excellent Performance in Various Conditions: Low-temperature coefficient ensures good energy production even in warmer.

Lorem Ipsum?

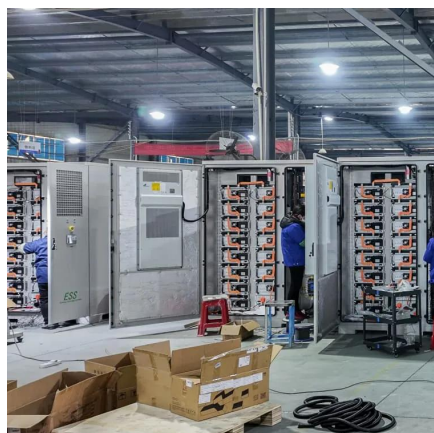
is simply dummy text of the printing and typesetting industry. Lorem Ipsum has been the industry's standard dummy text ever since the 1500s. (Electrical Data At STC) Too many choices of suppliers and products?

Let our team find suppliers for you, for free! Too many choices of suppliers.

The Mission Solar MSE385SX5R 19 385W Solar Panel is a high-performance, monocrystalline photovoltaic module designed for residential and commercial solar energy systems. Measuring 1925.2 x 992.8 mm and weighing approximately 21.8 kg each, these panels are equipped with 120 half-cut multicrystalline.



385w solar panel size



385 Watt Solar panels' range of prices, dimensions, sizes, voltage

385 Watt Solar panels' range of prices, dimensions, sizes, voltage output, specifications datasheets Ranges of information Voltage: 10.8V ~ 57.75V Amp: 0.44A ~ 16.19A

[Request Quote](#)

[Trina 385W Solar Panel 120 Cell TSM-385](#)

...

TSM-385DE09C.07 produces 385 W of power under standard test conditions. Greater energy as temperature rises is a mark of a good ...

[Request Quote](#)



Q Cells 385w Datasheet

Its compact size and low-profile frame make it easy to install and maintain. Additionally, the panel is built to withstand harsh weather elements, ensuring long-lasting durability and optimal ...

[Request Quote](#)

[385 Watt Solar Panels: Revolutionizing Green Energy with ...](#)

How do 385w solar panels compare to other wattages? 385w solar panels are generally more efficient and offer a higher power output than lower wattage panels, making ...



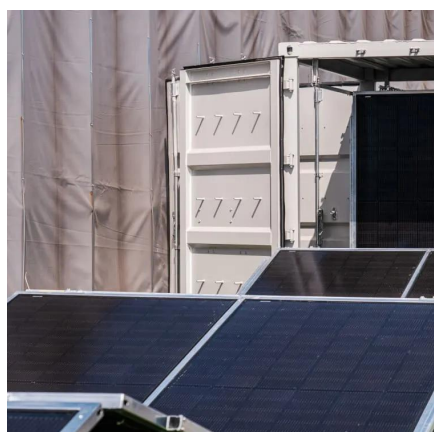
[Request Quote](#)



Trina 385W Solar Panel 120 Cell TSM-385-DE09C.07 Bifacial ...

TSM-385DE09C.07 produces 385 W of power under standard test conditions. Greater energy as temperature rises is a mark of a good temperature coefficient. Your panel's ...

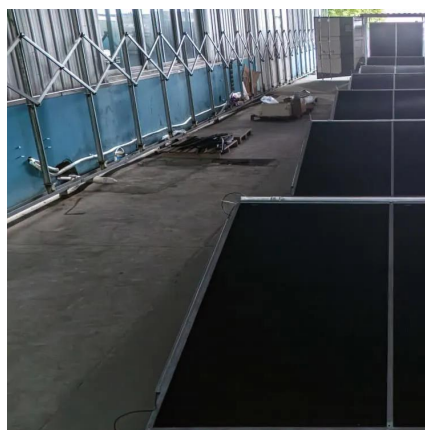
[Request Quote](#)



Mission Solar MSE385SX5R 385W Solar Panel

The MSE385SX5R PERC 66 mono-crystalline solar panel is a 66 cell solar panel with the highest power output in its class. It's high efficiency and certified reliability make it ideal for utility grid ...

[Request Quote](#)



385 Watt Solar Panels: Revolutionizing Green Energy with Unmatched

How do 385w solar panels compare to other wattages? 385w solar panels are generally more efficient and ...

[Request Quote](#)



Trina 385W (Pallet of 36) Bifacial



Solar Panels TSM-385NE09RC.05

Ease of Installation: Compact size and manageable weight contribute to simpler handling and installation, making it suitable for a range of applications. Cost-Effectiveness: Designed to be a

...

[Request Quote](#)



[Mission Solar Panel 385W 72 cell MSE385SR9S](#)

High-Power, American Quality
Her Efficiency of Up to 19.11%
High Efficiency at High Temperatures
Quality and Reliability
Enhanced Frame Design
12 Year Product and 25 Year Performance Warranty
This panel is a 72 cell solar panel featuring a sleek, all-black design coupled with outstanding power output. Its design makes it ideal for residential and commercial rooftop systems. Strong 40mm robust frame increases durability and strength and being able to withstand a heavy snow load up to 5631 Pa and large hail. Added ammonia and salt mist res
See more on a1solarstore
Brand: Mission Solar
Rated Power Output: 385 W
Length: 78.7in
Voltage (VOC): 48.53V
Solar Electric Supply

Mission Solar MSE385SX5R 385W Solar Panel

The MSE385SX5R PERC 66 mono-crystalline solar panel is a 66 cell solar panel with the highest power output in its class. It's high efficiency and ...

[Request Quote](#)

[MISSION SOLAR MSE385SX5R Panels 385W](#)

Measuring 1925.2 x 992.8 mm and weighing approximately 21.8 kg each, these panels are equipped with 120 half-cut multicrystalline cells that ...

[Request Quote](#)



385 Watt Solar Panels

Shop here to find low priced solar panels that generate 385 watts of DC power. These modules can be grid-tied or used off-grid for residential, commercial or community renewable energy ...

[Request Quote](#)



[MISSION SOLAR MSE385SX5R Panels 385W](#)

Measuring 1925.2 x 992.8 mm and weighing approximately 21.8 kg each, these panels are equipped with 120 half-cut multicrystalline cells that convert solar energy into electricity with ...

[Request Quote](#)



Q Cells 385w Datasheet

Its compact size and low-profile frame make it easy to install and maintain. Additionally, the panel is built to withstand harsh weather elements, ...

[Request Quote](#)



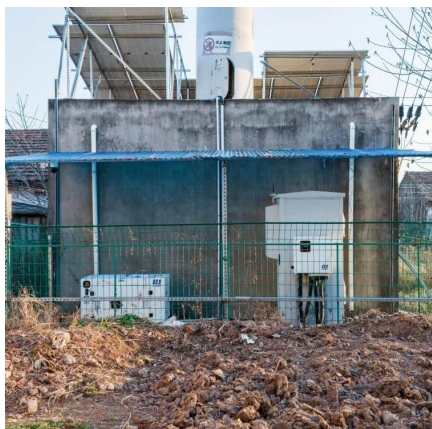
[Mission Solar Panel 385W 72 cell](#)



[MSE385SR9S](#)

This panel is a 72 cell solar panel featuring a sleek, all-black design coupled with outstanding power output. Its design makes it ideal for residential and commercial rooftop systems.

[Request Quote](#)



[385W Tolerance Positive Power Class leading power output](#)

est-in-class reliability. Our product line is tailored for residential, commercial and utility applications. Every Mission Solar Energy solar modul is certified an

[Request Quote](#)



Contact Us

For catalog requests, pricing, or partnerships, please visit:

<https://www.energyinnovationday.pl>

Phone: +48 22 335 1273

Email: info@energyinnovationday.pl

Scan the QR code to contact us via WhatsApp.

