



# 20kw inverter weight





## Overview

---

The Huawei SUN2000-20KTL-M5 20kW Three-Phase Inverter has dimensions of 525 x 470 x 262 mm and a weight of 25 kg, a very light device so that it can be installed by a single person.

The Huawei SUN2000-20KTL-M5 20kW Three-Phase Inverter has dimensions of 525 x 470 x 262 mm and a weight of 25 kg, a very light device so that it can be installed by a single person.

The inverter combines proven performance with new safety technology, making the Fronius Symo Advanced the future-proof choice for commercial photovoltaic systems of all sizes. The latest generation of the inverter with power categories ranging from 10 to 20 kW impresses with reliable arc protection.

The Huawei SUN2000-20KTL-M5 20kW grid-connected inverter is prepared to be installed in homes that are supplied with three-phase current. This inverter is an intermediate model within the new residential range of Huawei three-phase grid-connected inverters. The Huawei SUN2000-20KTL-M5 20kW Inverter.

SolarEdge offers three models of three-phase commercial inverters. The SE9kUS and SE14.4kUS model can be used at 208 VAC 3-P WYE or Delta configurations, and the SE33.3kUS inverter can connect to 480 VAC 3-P WYE configuration grids. The SolarEdge inverters are designed to work exclusively with.

Charging Current (A) 260 Max. Discharging Current (A) 260 Max. PV Input Voltage (V) Max. Operating PV Input Current (A) Max. Input Short-Circuit Current (A) Max. Continuous AC Passthrough (grid to load) (A) Max. Efficiency Max. PV Access Power (W) 28000 Max. PV Input Power (W) 22400 Max. AC.

S6-EH3P (12-20)K-H series three-phase energy storage inverter, suitable for large residential and small commercial PV energy storage systems. This series of products support generator networking and parallel operation of multiple inverters; 4 MPPT design, is perfect for large rooftop PV energy.

The transformerless, three-phase Fronius Symo Advanced 20.0-3 string inverter handles up to 26,000 Watt DC input and delivers 20,000 Watt AC output for commercial solar installations with a 480V, 3-phase grid connection. The high



system voltage and wide input range ensure maximum flexibility in.



## 20kw inverter weight



### [Huawei Three-Phase Inverter SUN2000-20KTL-M5 20kW](#)

The Huawei SUN2000-20KTL-M5 20kW Three-Phase Inverter has dimensions of 525 x 470 x 262 mm and a weight of 25 kg, a very light device so that it can be installed by a single person.

[Request Quote](#)

### **Symo Advanced 20.0-3-M**

The latest generation of the inverter with power categories ranging from 10 to 20 kW impresses with reliable arc protection through the new Fronius Arc Guard technology, SuperFlex Design ...

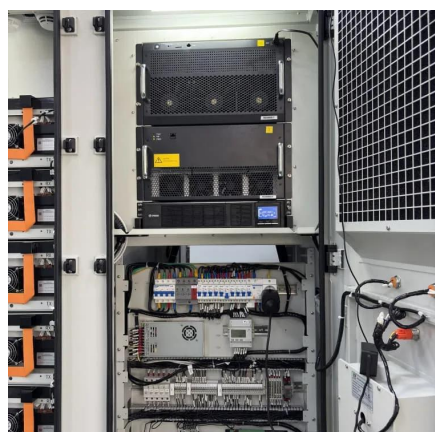
[Request Quote](#)



### [3 Phase Hybrid Inverter 20kW Datasheet](#)

It features easy plug and play installation and on / off grid phase balancing. Additionally, it will minimise import by discharging to meet demand in the property with a discharge rate of up to ...

[Request Quote](#)



### [Eifesun , 20KW On-grid , Solar Inverter Datasheet](#)

Detailed profile including pictures, certification details and manufacturer PDF.

[Request Quote](#)



### [Solis 20KW Three Phase HV Hybrid Inverter](#)

This series of products support generator networking and parallel ...

[Request Quote](#)



### [Solis 20KW Three Phase HV Hybrid Inverter](#)

This series of products support generator networking and parallel operation of multiple inverters; 4 MPPT design, is perfect for large rooftop PV energy storage systems with more roof ...

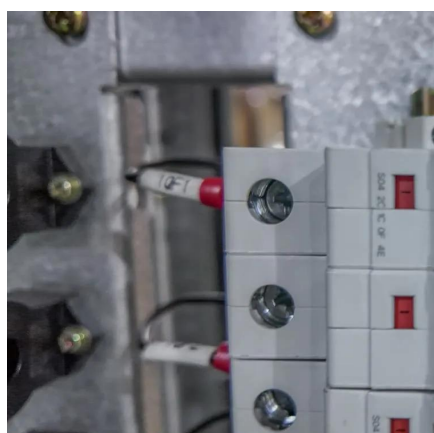
[Request Quote](#)



### **20kW Fronius Symo Advanced 20.0-3 480V 3-Phase String Inverter**

The transformerless, three-phase Fronius Symo Advanced 20.0-3 string inverter handles up to 26,000 Watt DC input and delivers 20,000 Watt AC output for commercial solar installations ...

[Request Quote](#)



### **Three Phase Hybrid Inverter**



Three Phase Hybrid Inverter SUN-14/15/16/18/20K-SG05LP3-EU-SM2 ACDC Norma Alarm 100% unbalanced output, each phase; Max. output up to 50% rated power AC ...

[Request Quote](#)



### FOX ESS T20-G3 20.0 kW

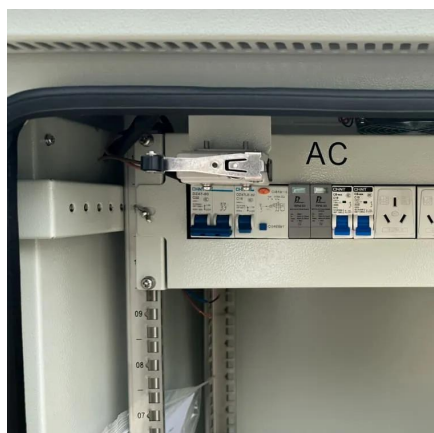
Featuring an input voltage range of 600.0-1100.0 V, this inverter is ideal for projects with diverse solar panel setups. This inverter offers a practical solution for your solar energy needs with a ...

[Request Quote](#)

### [SolarEdge Three Phase SE20K-US 20kW Inverter](#)

These wall-mountable inverters are lightweight, and have built in module-level monitoring. They include an integrated code-compliant DC disconnect, Ethernet interface, and RS-485 serial ...

[Request Quote](#)



### [SolarEdge Three Phase SE20K-US 20kW Inverter](#)

These wall-mountable inverters are lightweight, and have built in module ...

[Request Quote](#)

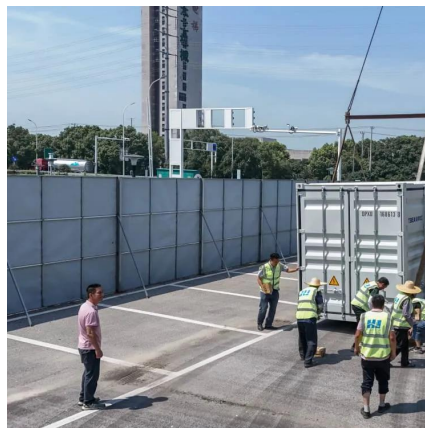
### Eifesun , 20KW On-grid , Solar



## Inverter Datasheet , ENF Inverter ...

Detailed profile including pictures, certification details and manufacturer PDF.

[Request Quote](#)



## Huawei SUN2000-20KTL-M5

This new version incorporates a higher degree of protection (IP66) and facilitates a simpler installation process due to its lighter weight and smaller size compared to other inverters in the ...

[Request Quote](#)

## 20kW Fronius Symo Advanced 20.0-3 480V 3 ...

The transformerless, three-phase Fronius Symo Advanced 20.0-3 string inverter handles up to 26,000 Watt DC input and delivers 20,000 Watt AC ...

[Request Quote](#)





## Contact Us

---

For catalog requests, pricing, or partnerships, please visit:

<https://www.energyinnovationday.pl>

Phone: +48 22 335 1273

Email: [info@energyinnovationday.pl](mailto:info@energyinnovationday.pl)

Scan the QR code to contact us via WhatsApp.

