



20W solar current





Overview

How much current does a 20W solar panel output?

1. A 20W solar panel typically produces between 1.5 to 2 amps of current under optimal conditions, depending on factors such as sunlight intensity and temperature.

How much current does a 20W solar panel output?

1. A 20W solar panel typically produces between 1.5 to 2 amps of current under optimal conditions, depending on factors such as sunlight intensity and temperature.

How much current does a 20W solar panel output?

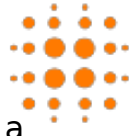
1. A 20W solar panel typically produces between 1.5 to 2 amps of current under optimal conditions, depending on factors such as sunlight intensity and temperature. Factors affecting output include, 2. photovoltaic technology efficiency, which can.

20-watt solar panels are small solar panels designed to generate electricity from sunlight. They are great for charging batteries or powering small devices. These panels are lightweight and easy to install. Their size usually makes them portable, perfect for camping or small homes. Here are some.

Solar panel ratings are crucial for understanding how solar panels perform and what they're capable of. Whether you're setting up a DIY system or a larger solar installation, these ratings help you choose the right panels and design your system effectively. In this article, I'll break down the.

J-type junction box has accessible terminals for easier module interconnections in off-grid applications, and it allows fitting cable glands for various sections. Cell interconnections and diode placement use well-established industry practice and are field-proven to provide excellent reliability.

20-watt solar panels are one of the smallest solar panel sizes at the lowest price. They are helpful for many applications in the home and on the go. Here are some

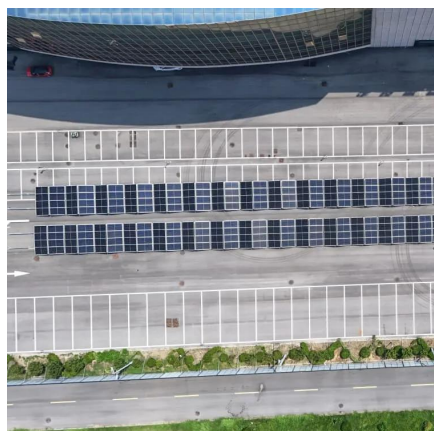


of the key aspects of 20-watt solar panels this article covers; If you've got a 20-watt solar panel or are interested in what they can.

The 20W Mono Solar Panel is a compact and efficient monocrystalline solar panel designed to convert sunlight into electrical energy. With a power output of 20 watts, this solar panel is ideal for small-scale applications such as charging batteries, powering small electronic devices, or serving as a.



20W solar current



[20 Watt Solar Panels \(Power - Charge - Kits - Control\)](#)

Under optimum conditions, a 20W solar panel can create 1.34 amps per hour. For example, under perfect conditions, the panel will produce 20 Watts for 7 hours per day, 7 days ...

[Request Quote](#)

[20-Watt Monocrystalline Solar Panel Kit with Smart ...](#)

Built for reliable portable power, this 20W solar ...

[Request Quote](#)



[How much current does a 20W solar panel output? , NenPower](#)

A 20W solar panel typically produces between 1.5 to 2 amps of current under optimal conditions, depending on factors such as sunlight intensity and temperature.

[Request Quote](#)

20W Solar Panel Kit

Perfect for powering remote applications, this kit includes a durable 20W 12V monocrystalline solar panel, a reliable 10A PWM solar charge controller, and a sturdy single-arm side-of-pole ...

[Request Quote](#)



[How to Use 20W Mono Solar: Examples, Pinouts, and Specs](#)

Learn how to use the 20W Mono Solar with detailed documentation, including pinouts, usage guides, and example projects. Perfect for students, hobbyists, and developers integrating the ...

[Request Quote](#)



20W Solar Panel Kit

Perfect for powering remote applications, this kit includes a durable 20W 12V monocrystalline solar panel, a reliable 10A PWM solar charge controller, ...

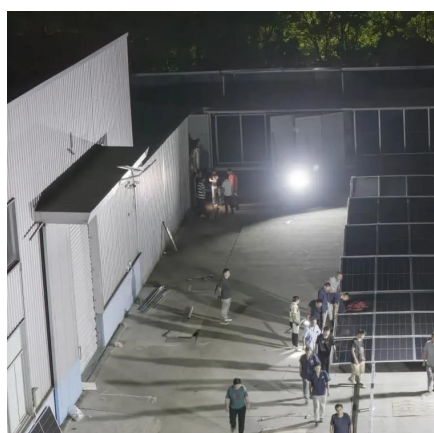
[Request Quote](#)



20 Watt Solar Panel: Efficient Energy Solutions , Anmak solar

A 20-watt solar panel can produce 20 watts of electricity under perfect sunlight conditions. However, actual output may vary due to weather and angles of sunlight.

[Request Quote](#)



[20 Watt Solar Panel: Efficient Energy](#)



[Solutions](#)

A 20-watt solar panel can produce 20 watts of electricity ...

[Request Quote](#)



Best 20 Watt Solar Panels for Off-Grid Charging and Maintainers

For those seeking compact, reliable solar solutions, 20-watt panels offer portable power for cars, boats, RVs, and emergency gear. This guide highlights five solid options and provides ...

[Request Quote](#)

Ameresco Solar 20J-20W

From mountaintops to off-shore platforms, on weather stations in the bitter cold of Antarctica and on telephone signal repeaters in the hot Australian outback, the technology has been proven ...

[Request Quote](#)



PVWatts Calculator

NREL's PVWatts ® Calculator Estimates the energy production of grid-connected photovoltaic (PV) energy systems throughout the world. It allows homeowners, small building owners, ...

[Request Quote](#)

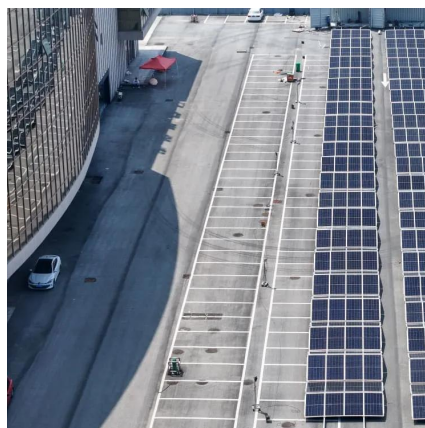
20-Watt Monocrystalline Solar Panel



Kit with Smart Controller and

Built for reliable portable power, this 20W solar panel kit features a smart controller and adjustable mount for optimal 12V battery charging. Ideal for maintaining 12V batteries in vehicles and ...

[Request Quote](#)



Solar Panel Ratings Explained - Wattage, Current, Voltage, and

The Maximum Power Current rating (I_{mp}) on a solar panel indicates the amount of current produced by a solar panel when it's operating at its maximum power output (P_{max}) ...

[Request Quote](#)



20 Watt Solar Panels (Power - Charge - Kits - ...

Under optimum conditions, a 20W solar panel can create 1.34 amps per hour. For example, under perfect conditions, the panel will ...

[Request Quote](#)



Solar Panel Ratings Explained - Wattage, Current, Voltage, and

From mountaintops to off-shore platforms, on weather stations in the bitter cold of Antarctica and on telephone signal repeaters in the hot Australian outback, the technology has been proven ...

[Request Quote](#)





Contact Us

For catalog requests, pricing, or partnerships, please visit:

<https://www.energyinnovationday.pl>

Phone: +48 22 335 1273

Email: info@energyinnovationday.pl

Scan the QR code to contact us via WhatsApp.

