



200a inverter 24 volt to 220v





200a inverter 24 volt to 220v



[Circuit requirements add up to more than 200 amps?](#)

The only real way to evaluate whether a 200A mains service is adequate for a dwelling is to carefully evaluate the load rating of all the actual devices that are likely to be in use at the ...

[Request Quote](#)

electrical

Meter Socket: 200A socket, replaced 15 years ago.
Panel problem: Rust and corrosion, likely due to flood ~1990. Breakers starting to need replacement Power is overhead ...

[Request Quote](#)



[Feed new 200A panel from top or bottom?](#)

I'm planning to upgrade my panel and service from 100A to 200A. I have an underground utility feed going into a 200A meter pan, this feeds a second meter pan with a ...

[Request Quote](#)

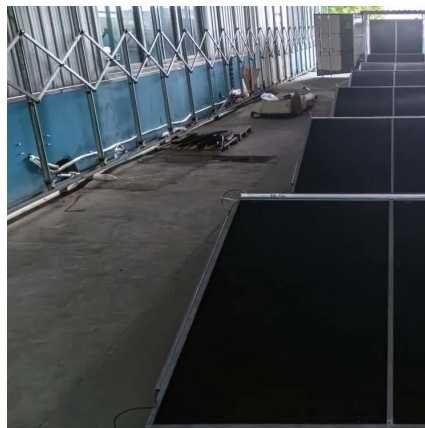


[Can I have a 200 amp rated box but only run 100 amp service](#)

Indeed. I have 400A service in part because the price from the utility (install and monthly) was exactly the same for 100, 200 or 400 (Class 320) so the only upcharge was an ...



[Request Quote](#)



electrical

The new service will be 400A (well 320/400) with the shop eating 200A and a backfeed to the house underground to its original panel (but moving the feed from overhead ...

[Request Quote](#)

Swapping main breaker in a 200A panel with a 100A main breaker

My question is simple. Can I buy a 200A rated loadcenter and swap the 200A main breaker for 100A to comply with CSA code (the main breaker can't exceed the maximum ...

[Request Quote](#)



electrical

The meter itself is very likely to be 200A rated, and there is a moderate chance the service drop is 200A rated (mine was but the utility replaced it anyway "because they always ...

[Request Quote](#)



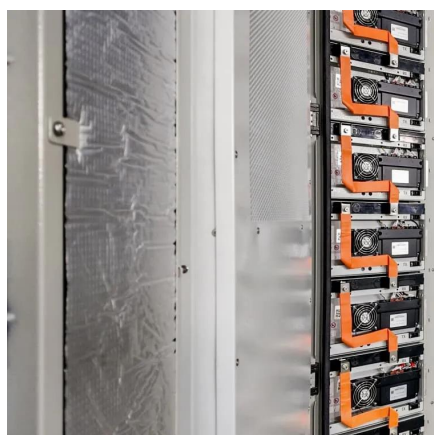
[What wire size do I need for a 200A](#)



[residential service?](#)

I'm planning on upgrading my electrical service to 200 amps but I'm not sure what aluminum wire size I need. I get confused with the ambient temperature chart, I'm located ...

[Request Quote](#)



What wire should I run 200A from main panel to subpanel 140' ...

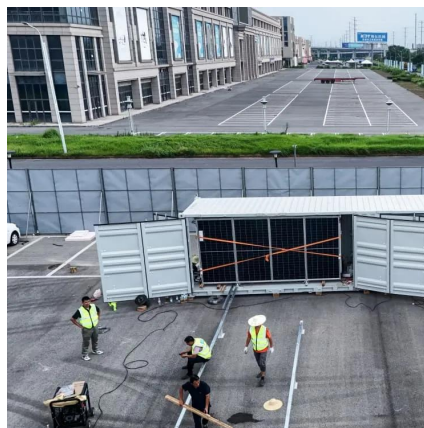
What wire should I run 200A from main panel to subpanel 140' away through an attic and through conduit in the ground? Ask Question Asked 2 years, 4 months ago Modified ...

[Request Quote](#)

electrical

I recently got a service upgrade to 200A. My old sub panel (from which all branch circuits connect) was 100A and recently got upgraded as well but the feeders are unchanged. ...

[Request Quote](#)





Contact Us

For catalog requests, pricing, or partnerships, please visit:

<https://www.energyinnovationday.pl>

Phone: +48 22 335 1273

Email: info@energyinnovationday.pl

Scan the QR code to contact us via WhatsApp.

