



15MWh Norwegian photovoltaic container used in train station





Overview

Norwegian rail infrastructure manager Bane NOR plans to make the first train station in the country solar-powered. It will install 4,500 square metres of photovoltaic panels on the roof of the Drammen railway station. This pilot project will be finished in 2024.

Norwegian rail infrastructure manager Bane NOR plans to make the first train station in the country solar-powered. It will install 4,500 square metres of photovoltaic panels on the roof of the Drammen railway station. This pilot project will be finished in 2024.

The Brightline Solar Project in Belgium stands as a pioneering achievement, featuring 50,000 solar panels along a 3.4km stretch of high-speed rail between Antwerp and Amsterdam, generating 3.3 MWh annually to power train operations and station facilities. In the Netherlands, the ProRail Solar.

With Solarfold, you produce energy where it is needed and where it pays off. The innovative and mobile solar container contains 200 photovoltaic modules with a maximum nominal output of 134 kWp and, thanks to the lightweight and environmentally friendly aluminum rail system, enables rapid and.

Solar railways involve the strategic installation of photovoltaic (PV) panels along railway tracks to harness solar energy directly into the rail transport network. This approach reduces the carbon footprint of train operations and enhances the overall energy efficiency of the rail network. PV.

Norwegian rail infrastructure manager Bane NOR plans to make the first train station in the country solar-powered. It will install 4,500 square metres of photovoltaic panels on the roof of the Drammen railway station. This pilot project will be finished in 2024. The installation of the solar panels.

The Solarcontainer represents a grid-independent solution as a mobile solar plant. Especially in remote areas it can guarantee a stable energy supply or support or almost replace a public grid with strong power fluctuations, as well as diesel generators that are used. The use of multiple modules to.

Solarfold allows you to generate electricity where it's needed, and where it pays to



do so. The innovative and mobile solar container contains 196 PV modules with a maximum nominal power rating of 130kWp, and can be extended with suitable energy storage systems. The lightweight.



15MWh Norwegian photovoltaic container used in train station



Photovoltaic and rail transportation: Is it the future, or a failure

Rail companies can install PV modules on the roof of trains to generate power for onboard services, such as air conditioning, lighting, and security. They can also install PV ...

[Request Quote](#)

solarfold , Mobile Solar Container

The innovative and mobile solar container contains 196 PV modules with a maximum nominal power rating of 130kWp, and can be extended with ...

[Request Quote](#)



Solar Railways: How Europe's Train Networks Are ...

These specialized photovoltaic systems are engineered to fit seamlessly between or alongside railroad tracks, maximizing otherwise ...

[Request Quote](#)



ALUMERO systems -- solarfold

The innovative and mobile solar container contains 200 photovoltaic modules with a maximum nominal output of 134 kWp and, thanks to the lightweight and environmentally friendly ...

[Request Quote](#)



Neighbor Home

What should I post about on Nextdoor? What is Nextdoor? Which countries is Nextdoor available in? Why can't Nextdoor validate my address? How can I find past For Sale & Free transactions?

[Request Quote](#)



[First solar-powered train station in](#)

Nextdoor

Log in to Nextdoor to connect with your neighbors and access local news, events, and community updates in a secure environment.

[Request Quote](#)



Log in to Nextdoor

Make sure you're checking the correct inbox/spam folder, temporarily disable any VPN/firewalls, and ensure your email provider is not blocking Nextdoor's domain.

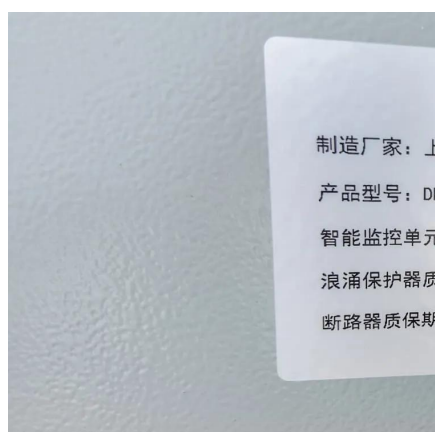
[Request Quote](#)



Norway

Norwegian rail infrastructure manager Bane NOR plans to make the first train station in the country solar-powered. It will install 4,500 ...

[Request Quote](#)



Solar Railways: Pioneering Sustainable Solutions in Train Transport

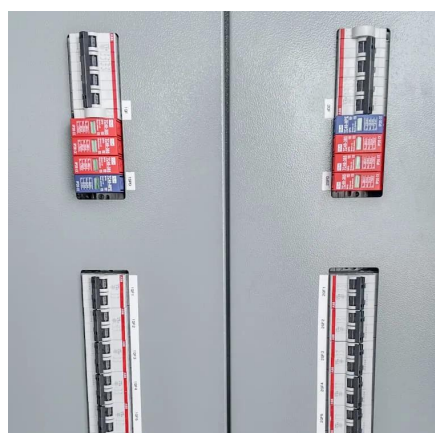
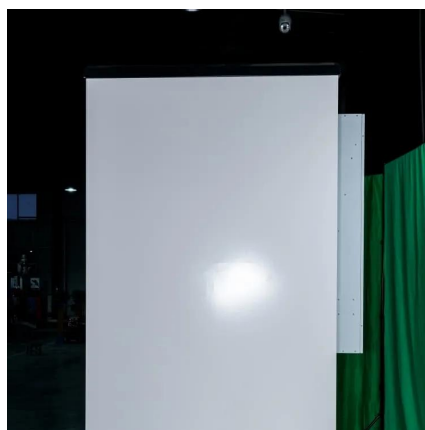
Solar railways involve the strategic installation of photovoltaic (PV) panels along railway tracks to harness solar energy directly into the rail transport network. This approach ...

[Request Quote](#)

Mobile Solar Container Systems , Foldable PV Panels , LZY Container

LZY's photovoltaic power plant is designed to maximize ease of operation. It not only transports the PV equipment, but can also be deployed on site. It is based on a 10 - 40 foot shipping ...

[Request Quote](#)



Photovoltaic and rail transportation: Is it the future, ...

Rail companies can install PV modules on the roof of trains to generate power for onboard services, such as air conditioning, lighting, ...

[Request Quote](#)

Join your neighborhood , Nextdoor



Connect with neighbors, businesses, and public services in your area by joining Nextdoor to stay informed and build real-world connections.

[Request Quote](#)



Solar Railways: How Europe's Train Networks Are Harnessing ...

These specialized photovoltaic systems are engineered to fit seamlessly between or alongside railroad tracks, maximizing otherwise unused space while generating clean ...

[Request Quote](#)



Solarcontainer: The mobile solar system

Our pioneering and environmentally friendly solar systems: Folded solar panels in a container frame with corresponding standard dimensions, easy to unfold thanks to a sophisticated rail ...

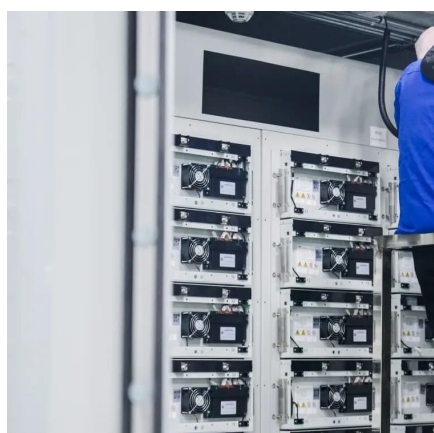
[Request Quote](#)



ALUMERO systems -- solarfold

The innovative and mobile solar container contains 200 photovoltaic modules with a maximum nominal output of 134 kWp and, thanks to the lightweight ...

[Request Quote](#)

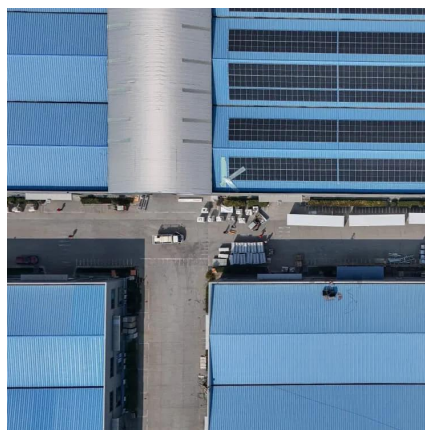


Search on Nextdoor



Search Nextdoor to see if someone has already asked for plumber recommendations, to find a neighbor by name, or to locate that Crime and Safety conversation that happened last month.

[Request Quote](#)



Nextdoor

A secure environment where neighbors verify their address to join. Stay informed with alerts and local news from trusted sources. Discover local favorites recommended by neighbors.

[Request Quote](#)



Join your neighborhood , Nextdoor

Connect with your neighbors and discover local news, events, and community updates in a secure environment on Nextdoor.

[Request Quote](#)



[Solar Railways: Pioneering Sustainable Solutions ...](#)

Solar railways involve the strategic installation of photovoltaic (PV) panels along railway tracks to harness solar energy directly into the ...

[Request Quote](#)



[Mobile Solar Container Systems , Foldable](#)



[PV ...](#)

LZY's photovoltaic power plant is designed to maximize ease of operation. It not only transports the PV equipment, but can also be deployed on site. It ...

[Request Quote](#)



solarfold , Mobile Solar Container

The innovative and mobile solar container contains 196 PV modules with a maximum nominal power rating of 130kWp, and can be extended with suitable energy storage systems. The ...

[Request Quote](#)

[Solarcontainer explained: What are mobile solar systems?](#)

The solar container is lifted using the corner corners in the roof frame. With these in the base frame, the module can be fixed and secured during transport using the twist-lock system.

[Request Quote](#)



Solar Railways: Pioneering Sustainable Solutions in Train Transport

By 2030, SNCF plans to install solar panels across 1.1 million square meters of railway station property. This ambitious project began with a consultation for the first 156 ...

[Request Quote](#)

Solar Railways: Pioneering



Sustainable Solutions in Train Transport

By 2030, SNCF plans to install solar panels across 1.1 million square meters of railway station property. This ...

[Request Quote](#)



[Solarcontainer: The mobile solar system](#)

Our pioneering and environmentally friendly solar systems: Folded solar panels in a container frame with corresponding standard dimensions, ...

[Request Quote](#)



[How to Log Into Nextdoor Using the App or Website](#)

You can log into Nextdoor's app or website with your email, Facebook, Apple, or Google account. Nextdoor is a social media site that connects you with your neighborhood.

[Request Quote](#)



[First solar-powered train station in Norway](#)

Norwegian rail infrastructure manager Bane NOR plans to make the first train station in the country solar-powered. It will install 4,500 square metres of photovoltaic panels ...

[Request Quote](#)





Contact Us

For catalog requests, pricing, or partnerships, please visit:

<https://www.energyinnovationday.pl>

Phone: +48 22 335 1273

Email: info@energyinnovationday.pl

Scan the QR code to contact us via WhatsApp.

