



12v100ah with 2000w inverter





12v100ah with 2000w inverter



[Will a 100Ah Lithium Battery Run a 2000W Inverter?](#)

A 100Ah lithium battery can technically power a 2000W inverter but only for short durations (?30 minutes at full load). Key factors include battery voltage (12V/24V), inverter ...

[Request Quote](#)

[How Can a 100Ah Battery Operate a 2000W Inverter?](#)

Can a 2000W inverter operate on a 100Ah battery? Yes, a 2000W inverter can technically run on a 100Ah battery, but it is not ideal for sustained use due to limitations in capacity and runtime.

[Request Quote](#)



[Will a 100Ah Battery Run a 2000W Inverter](#)

Typically, a 100Ah battery provides 12 volts, translating to 1200 watt-hours (Wh) of energy. This means that at full capacity, such a ...

[Request Quote](#)

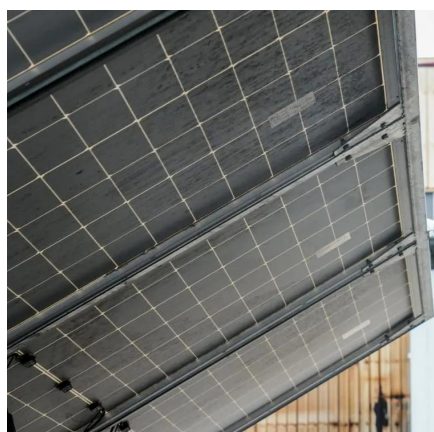


[What Size Inverter Can I Run Off a 100Ah Battery? A ...](#)

When selecting an inverter to pair with a 100Ah battery, it's crucial to understand the power requirements of your appliances and the capabilities of your inverter. The right ...



[Request Quote](#)



[Can I use a 2000W inverter with a 100Ah battery?](#)

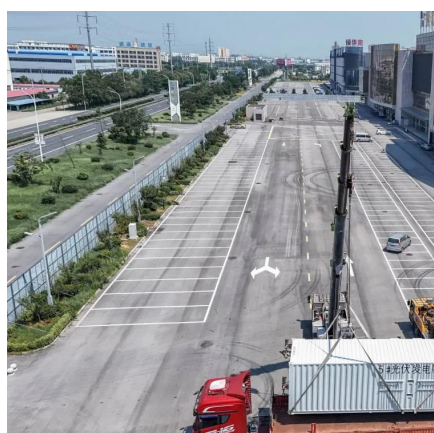
Using a 2000W inverter with a 100Ah battery is theoretically possible but requires strict voltage compatibility and load management. A 12V 100Ah battery stores 1.2kWh (12V × 100Ah), which ...

[Request Quote](#)

[Can I run a 2000 watt inverter on a 12V battery?](#)

That is, in actual cases, a 12V 100Ah battery can run a 2000W inverter for about 25.9 minutes. Hopefully, this article will help you better ...

[Request Quote](#)



[Will a 100Ah Battery Run a 2000W Inverter](#)

Typically, a 100Ah battery provides 12 volts, translating to 1200 watt-hours (Wh) of energy. This means that at full capacity, such a battery can theoretically run a 2000W inverter ...

[Request Quote](#)

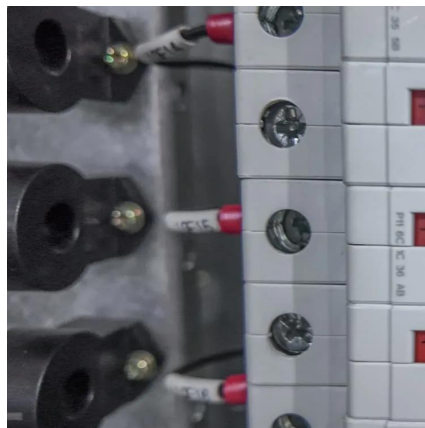
[Can I run a 2000 watt inverter on a 12V](#)



[battery?](#)

That is, in actual cases, a 12V 100Ah battery can run a 2000W inverter for about 25.9 minutes. Hopefully, this article will help you better understand how to match 12V batteries ...

[Request Quote](#)



[Can a 12V 100Ah Lithium Ion Battery Power a ...](#)

This demonstrates that a 12V 100Ah lithium ion battery can theoretically power a 2000W inverter. It can do so for about 27 minutes at ...

[Request Quote](#)

[Can I Run a 2000W Inverter with a 100Ah Battery?](#)

Running a 2000W inverter with a 100Ah battery is feasible, but practical usage may be limited. A fully charged 100Ah battery can provide approximately 1200 watt-hours (Wh) ...

[Request Quote](#)



[What Size Inverter Can I Run Off A 100Ah Battery? Maximize ...](#)

To calculate the wattage, use the formula: Watts = Volts x Amps. For a standard 12V battery, a 100Ah capacity translates to about 1200 watts (12V x 100A). However, in ...

[Request Quote](#)

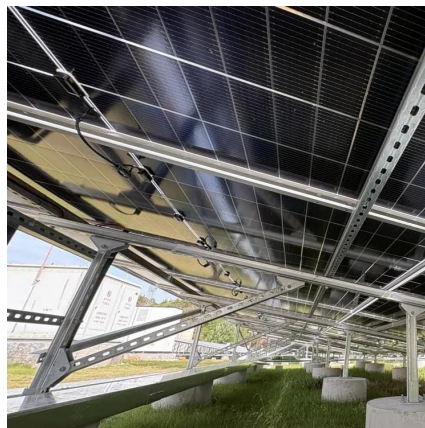
[Can a 12V 100Ah Lithium Ion Battery](#)



[Power a 2000W Inverter?](#)

This demonstrates that a 12V 100Ah lithium ion battery can theoretically power a 2000W inverter. It can do so for about 27 minutes at full load. This is true assuming the battery ...

[Request Quote](#)



[Can a 100Ah Battery Power a 2000W Inverter? Key Insights](#)

A 100Ah battery can technically run a 2000W inverter but only for 36-50 minutes at full load, assuming a 12V system and 85% inverter efficiency. Real-world runtime depends on battery ...

[Request Quote](#)



Contact Us

For catalog requests, pricing, or partnerships, please visit:

<https://www.energyinnovationday.pl>

Phone: +48 22 335 1273

Email: info@energyinnovationday.pl

Scan the QR code to contact us via WhatsApp.

