



# 12v solar container lithium battery pack has a low voltage





## Overview

---

After the voltage reaches 12V+, switch back to solar or inverter as needed. □ Tip: Use a lithium-specific charger (not AGM mode) to avoid undercharging or damaging the battery. If no charger is available, this workaround can help: This temporarily boosts the.

After the voltage reaches 12V+, switch back to solar or inverter as needed. □ Tip: Use a lithium-specific charger (not AGM mode) to avoid undercharging or damaging the battery. If no charger is available, this workaround can help: This temporarily boosts the.

Lithium batteries are reliable and long-lasting, but if your battery suddenly stops powering your gear or won't charge, it may have gone into Low Voltage Disconnect (LVD). This is a built-in safety feature controlled by the Battery Management System (BMS) to protect the battery from being.

By understanding how to repair a lithium battery pack with the right approach, you can protect safety features and extend the lifespan of your lithium-ion battery. Regularly inspect lithium battery packs for signs like swelling, low voltage, or overheating to catch problems early and keep them.

A healthy 12V Lithium battery in Australia should read around 12.8V–13.4V at rest. Below 10V?

That usually means the BMS has disconnected output due to over-discharge. 2. Test Battery Capacity Use a smart charger or battery monitor to log amp-hour output during a full discharge cycle. Compare.

Experiencing charging issues with your 12V lithium battery can be frustrating, but diagnosing and resolving these problems is often straightforward. This comprehensive guide outlines effective troubleshooting steps to help you identify the cause and restore functionality. 1. Check Connections 2.

There are several possible reasons for zero voltage or low voltage in battery packs. These include: Individual Cell Failure: One or more cells inside the pack may have dropped to zero voltage. Connector Issues: Plug short circuits, loose connectors, or broken cables may prevent current flow.



For common problems with lithium-ion batteries, we can usually determine the health of the battery by measuring its voltage and inspecting the battery temperature. Please refer to the troubleshooting steps corresponding to each specific problem for more details. [How to Troubleshoot Lithium-ion.](#)



## 12v solar container lithium battery pack has a low voltage



### 6. Troubleshooting & support

During normal operation of a lithium battery, small differences between cell voltages occur all the time. These are caused by slight differences between the internal resistance and self ...

[Request Quote](#)

### 12V Battery Voltage Chart - Read Levels & State of Charge -- Solar ...

In this comprehensive guide, we'll explain how to read and use voltage charts for 12V batteries, covering lithium, LiFePO4, AGM, and traditional lead acid options.

[Request Quote](#)



### 4 Simple Solutions to Solve Battery Pack Low ...

Learn how to fix battery pack low voltage issues. Discover common causes, troubleshooting tips, and safety advice to extend your ...

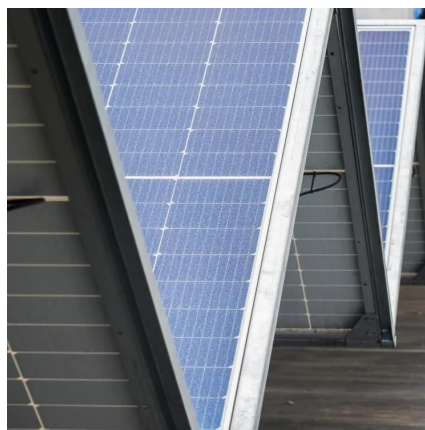
[Request Quote](#)



### 4 Simple Solutions to Solve Battery Pack Low Voltage Problems

Learn how to fix battery pack low voltage issues. Discover common causes, troubleshooting tips, and safety advice to extend your battery life.

[Request Quote](#)



## [Troubleshoot Lithium Batteries , Renogy US](#)

If the open circuit voltage of the battery is lower than 10V (for 12V lithium battery) or 20V (for 24V lithium battery), it means that the battery is in ...

[Request Quote](#)

## [DIY 12V Lithium Battery Low Voltage while under ...](#)

The battery voltage drops significantly even under super small loads. Under no load the battery voltage reads 13.09V, but once I start ...

[Request Quote](#)



## [DIY 12V Lithium Battery Low Voltage while under light load](#)

The battery voltage drops significantly even under super small loads. Under no load the battery voltage reads 13.09V, but once I start pulling 10 watts the voltage drops to 12.4V ...

[Request Quote](#)



## [Troubleshoot Lithium Batteries , Renogy](#)



## US

If the open circuit voltage of the battery is lower than 10V (for 12V lithium battery) or 20V (for 24V lithium battery), it means that the battery is in under-voltage protection mode.

[Request Quote](#)



## **Why Your Lithium Battery Goes Into Low Voltage Disconnect -- ...**

Connect your lithium charger directly to the battery terminals. Turn the charger on -- it should detect the battery and start charging. Once the battery voltage rises above ~11V, ...

[Request Quote](#)

## [12V Battery Voltage Chart - Read Levels & State ...](#)

In this comprehensive guide, we'll explain how to read and use voltage charts for 12V batteries, covering lithium, LiFePO4, AGM, and ...

[Request Quote](#)



## [12V Lithium-Ion Battery: What Voltage at Full Charge?](#)

This guide explains 12V lithium-ion battery voltage, what "fully charged" means, and why voltage discrepancies occur, with tips for optimal performance.

[Request Quote](#)



## **How Do I Troubleshoot Issues with**



## My 12V Lithium Battery Not ...

Experiencing charging issues with your 12V lithium battery can be frustrating, but diagnosing and resolving these problems is often straightforward. This comprehensive guide ...

[Request Quote](#)



## [How to Repair a Lithium Battery Pack with Simple ...](#)

Regularly inspect lithium battery packs for signs like swelling, low voltage, or overheating to catch problems early and keep them safe. Use simple tests such as visual ...

[Request Quote](#)

## [How Do I Troubleshoot Issues with My 12V Lithium ...](#)

Experiencing charging issues with your 12V lithium battery can be frustrating, but diagnosing and resolving these problems is often ...

[Request Quote](#)



## [12V Lithium-Ion Battery: What Voltage at Full ...](#)

This guide explains 12V lithium-ion battery voltage, what "fully charged" means, and why voltage discrepancies occur, with tips for ...

[Request Quote](#)

## Lithium Battery Troubleshooting: Fix



## Charging & Common Issues

Low voltage is a common problem in Australia's hotter regions, where solar charge times can fluctuate. Here's how to recover a deeply discharged battery: Many chargers sold in ...

[Request Quote](#)





## Contact Us

---

For catalog requests, pricing, or partnerships, please visit:

<https://www.energyinnovationday.pl>

Phone: +48 22 335 1273

Email: [info@energyinnovationday.pl](mailto:info@energyinnovationday.pl)

Scan the QR code to contact us via WhatsApp.

