



12V400W inverter input current





Overview

What is the input voltage range for 400W power inverters?

The input voltage range for 400W power inverters is usually 12V to 24V. This range makes them compatible with most 12V and 24V batteries. Using the correct input voltage is crucial to prevent hazards like reproductive harm or birth defects. Always check the manufacturer's guidelines for specific voltage requirements.

How much power does a 400 watt inverter provide?

This 400 watt inverter provides 3.3 amps of AC household current, making it ideal for powering small electrical appliances. It is also lightweight, making it easy to take with you on camping trips or other outdoor activities. What size battery do I need for 400 watt inverter?

.

What voltage does an inverter use?

Most residential and small commercial inverters use one of the following DC input voltages: As voltage increases, the current required for the same power decreases, making high-voltage systems more efficient for high-power applications. While calculating inverter current is straightforward, other factors may affect the actual current draw:.

How many amps does a 3000W inverter draw from a 12V battery?

Inverter Current = Power ÷ Voltage Where: If you're working with kilowatts (kW), convert it to watts before calculation: Inverter Current = $1000 \div 12 = 83.33$ Amps So, the inverter draws 83.33 amps from a 12V battery. Inverter Current = $3000 \div 24 = 125$ Amps So, a 3000W inverter on a 24V system pulls 125 amps from the battery.



12V400W inverter input current



[Power Inverter 400 Watts: Get the Most Out of ...](#)

This 400 watt inverter provides 3.3 amps of AC household current, making it ideal for powering small electrical appliances. It is also ...

[Request Quote](#)

Microsoft Word

Depending on the user scenario, the AC output of the inverter may require user installed breaker or fuse. In AC output hardwire application, AC socket will not be provided.

[Request Quote](#)



[400w Power Inverter: Convenient and Efficient ...](#)

The input voltage range of the 400W Power Inverter is typically 12V to 24V, making it compatible with most 12V and 24V batteries. Using ...

[Request Quote](#)



[12V 400 Watt Pure Sine Wave Inverter , inverter](#)

This 400 watt pure sine wave inverter is built with user-friendly features, including AC outlet and a USB port for convenient charging. 12V pure sine inverter powers laptops, tablets, and other ...



[Request Quote](#)



[400w Power Inverter: Convenient and Efficient Solutions](#)

The input voltage range of the 400W Power Inverter is typically 12V to 24V, making it compatible with most 12V and 24V batteries. Using the correct input voltage is essential to ...

[Request Quote](#)



[Power Inverter 400 Watts: Get the Most Out of Your Inverter](#)

This 400 watt inverter provides 3.3 amps of AC household current, making it ideal for powering small electrical appliances. It is also lightweight, making it easy to take with you ...

[Request Quote](#)



Inverter Current Calculator

Enter the input voltage of the inverter system (typically 12V, 24V, or 48V DC). Click "Calculate" to find out the current the inverter will draw from the battery or DC power source.

[Request Quote](#)



[400 Watt Power Inverter 12 Volt DC To](#)



[110 Volt AC](#)

This 400 watt 12 volt dc to 120 volt ac power inverter provides 3.3 amps of ac household current. This small inverter is ideal for battery charging and operating small devices.

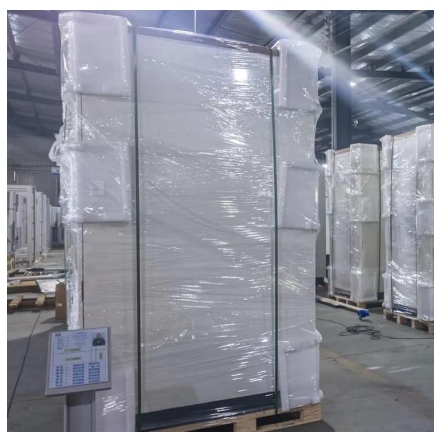
[Request Quote](#)



[Rally 400 Watt 12 Volt Power Inverter](#)

Input Voltage Range: 10.5 - 15.0 Volt DC Input
Current Range: 26.7 - 38.1 Amp (at 400 Watt Load) Output Frequency (Hz): 60 Hz (+/- 2 Hz)
Output ...

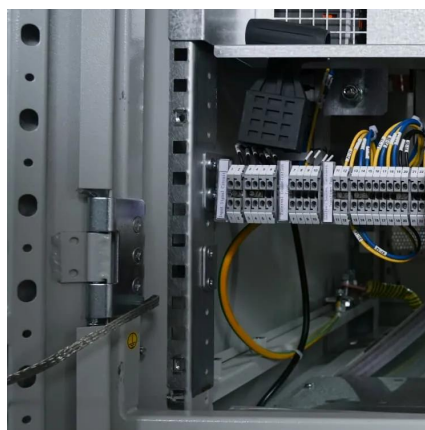
[Request Quote](#)



[Xantrex Xpower Digital Micro 400 12v 400W Inverter](#)

This provides the user with instant feedback on input current and output voltage and valuable troubleshooting guidance through Fault Codes. These new digital inverters provide a ...

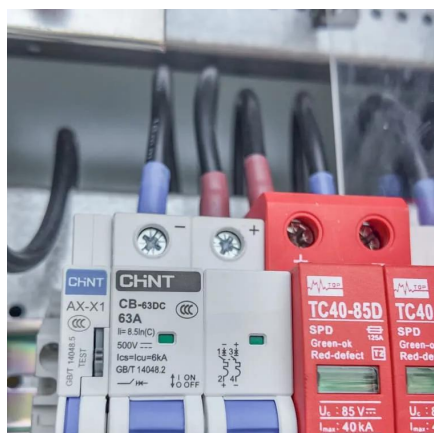
[Request Quote](#)



[400 Watt Power Inverter 12 Volt DC To 110 Volt AC](#)

This 400 watt 12 volt dc to 120 volt ac power inverter provides 3.3 amps of ac household current. This small inverter is ideal for battery charging and ...

[Request Quote](#)



[Rally 400 Watt 12 Volt Power Inverter](#)



Input Voltage Range: 10.5 - 15.0 Volt DC Input
Current Range: 26.7 - 38.1 Amp (at 400 Watt Load)
Output Frequency (Hz): 60 Hz (+/- 2 Hz)
Output Current: 3.2 - 3.6 Amp (at 400 Watt ...

[Request Quote](#)



400w Inverter 12V

The Merlin 400w 12V Inverter silently converts 12v DC battery power to 230v AC mains electricity using pure sinewave technology to provide an interference-free output that is fully compatible ...

[Request Quote](#)

Tycon Data Sheet

The INV-12-120-400 is a high efficiency (90%) power inverter to convert 12VDC to 120VAC 60Hz. The total power output is 400W continuous and 800W peak. The units have a low voltage ...

[Request Quote](#)





Contact Us

For catalog requests, pricing, or partnerships, please visit:

<https://www.energyinnovationday.pl>

Phone: +48 22 335 1273

Email: info@energyinnovationday.pl

Scan the QR code to contact us via WhatsApp.

