



120V solar container lithium battery pack is connected in series





Overview

First off, yes, lithium battery cells can absolutely be connected in series. Connecting battery cells in series means you're linking the positive terminal of one cell to the negative terminal of another.

First off, yes, lithium battery cells can absolutely be connected in series. Connecting battery cells in series means you're linking the positive terminal of one cell to the negative terminal of another.

Connecting lithium solar batteries in series or parallel is essential for customizing energy storage systems. In a series connection, the voltage increases while the capacity remains the same, making it suitable for high-voltage applications. In a parallel connection, the capacity increases while.

When you connect battery packs in series, you're essentially lining them up so that the positive terminal of one battery pack is connected to the negative terminal of the next one. This setup increases the overall voltage of the battery system while keeping the capacity (measured in amp - hours).

What are series and parallel connections in battery systems?

Battery connections can be configured in two primary ways: series and parallel. Series Connection: Increases the total voltage while keeping the capacity (Ah) the same. For example, connecting two 12V batteries in series results in a 24V.

First off, yes, lithium battery cells can absolutely be connected in series. Connecting battery cells in series means you're linking the positive terminal of one cell to the negative terminal of another. When you do this, the voltages of the individual cells add up, while the capacity (measured in.

Wiring lithium-ion batteries in series is a common practice to increase overall voltage. In fact, every battery pack we sell consists of a collection of cells that have been wired in series (and often in parallel, too). In this guide, we'll walk you through the steps on how to wire batteries in.

Quick Answer Lithium batteries can be connected in series to increase voltage, in parallel to increase capacity, or in a series-parallel configuration to increase both



voltage and capacity. This guide explains how to connect lithium batteries step by step, using clear examples and safety best.



120V solar container lithium battery pack is connected in series



[How to Connect Lithium Cells in Series and Parallel?](#)

We'll explore the basics and provide detailed, step-by-step instructions on how to connect li-ion cells in series, parallel, and series-parallel configurations.

[Request Quote](#)

[How to Connect Lithium Cells in Series and Parallel?](#)

We'll explore the basics and provide detailed, step-by-step instructions on how to connect li-ion cells in series, parallel, and series ...

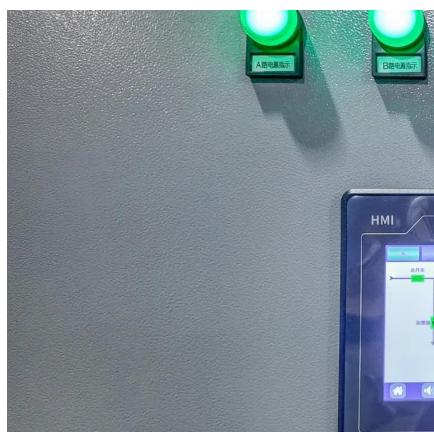
[Request Quote](#)



How to Effectively Connect Lithium Solar Batteries in Series and ...

Understanding how to connect these batteries in series or parallel is crucial for optimizing voltage and capacity. This guide explores the methods, benefits, considerations, ...

[Request Quote](#)

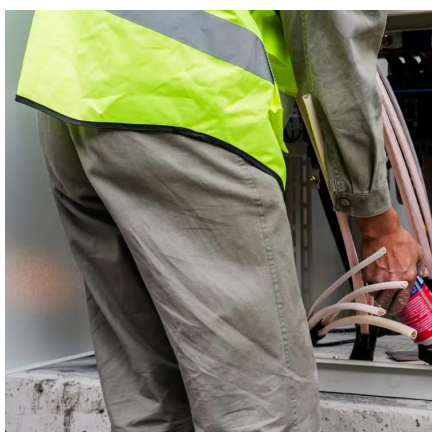


[Can lithium battery cells be connected in series?](#)

By connecting lithium battery cells in series, you can create a battery pack with the right voltage to store and use the solar energy effectively. Take our 24V 3Ah LFP Solar ...



[Request Quote](#)



[How To Connect Batteries In Series and Parallel](#)

To connect batteries in a series, a jumper wire connects a battery's negative terminal to another battery's positive terminal. This ...

[Request Quote](#)

[Batteries and Chargers Connected in Series and Parallel](#)

There are many ways to connect a group of batteries in both series and parallel at the same time. This is common practice in many battery power appliances, particularly in electric vehicles and ...

[Request Quote](#)



[How To Connect Batteries In Series and Parallel](#)

To connect batteries in a series, a jumper wire connects a battery's negative terminal to another battery's positive terminal. This leaves you with a positive terminal at the ...

[Request Quote](#)

[Can lithium battery cells be connected in](#)



[series?](#)

By connecting lithium battery cells in series, you can create a battery pack with the right voltage to store and use the solar energy ...

[Request Quote](#)



[Batteries in Series vs Parallel: Understand The Differences](#)

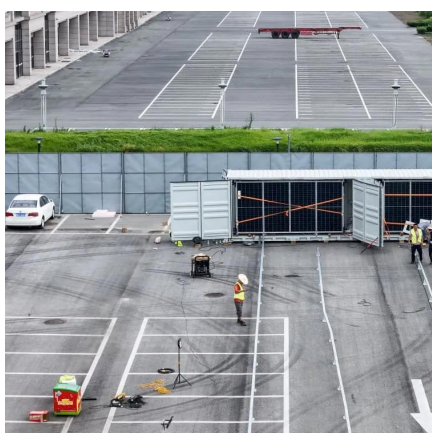
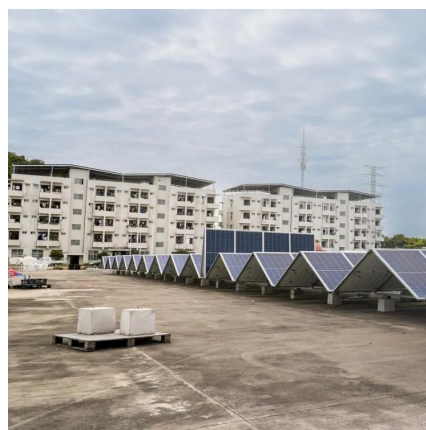
In terms of battery service life, series connection will have a longer service life because the voltage of the series system increases, the current remains unchanged, and the same power ...

[Request Quote](#)

[Powering Up Safely: How to Wire Batteries in Series](#)

In this guide, we'll walk you through the steps on how to wire batteries in series to safely create a higher voltage battery pack for your needs. Note that when connecting ...

[Request Quote](#)



[Can a lithium battery pack be used in series?](#)

In solar energy storage systems, for example, multiple lithium battery packs are often connected in series to store the energy generated ...

[Request Quote](#)

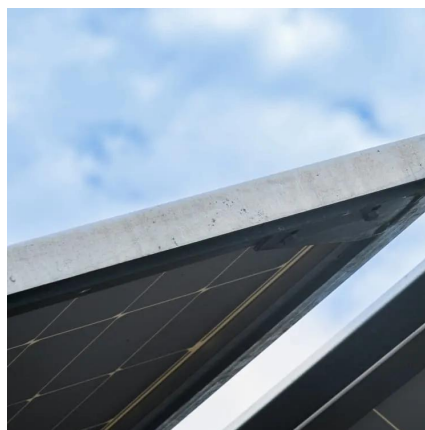
[Lithium Solar Batteries Series vs Parallel](#)



...

Lithium solar batteries are essential components of solar energy systems, providing reliable energy storage for various ...

[Request Quote](#)



[How to Connect Lithium Solar Batteries in Series & Parallel](#)

When setting up lithium solar batteries, understanding how to connect them in series or parallel is crucial for maximizing efficiency and performance. Below, we delve into the ...

[Request Quote](#)



[Batteries and Chargers Connected in Series and ...](#)

There are many ways to connect a group of batteries in both series and parallel at the same time. This is common practice in many battery power ...

[Request Quote](#)



[Powering Up Safely: How to Wire Batteries in Series](#)

In this guide, we'll walk you through the steps on how to wire batteries in series to safely create a higher voltage battery pack for your ...

[Request Quote](#)



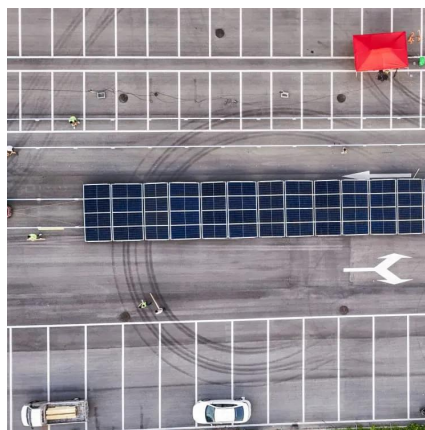
[Lithium Solar Batteries Series vs Parallel](#)



[Connection](#)

Lithium solar batteries are essential components of solar energy systems, providing reliable energy storage for various applications. Understanding how to connect these ...

[Request Quote](#)



[How to Connect Lithium Solar Batteries in Series](#)

When setting up lithium solar batteries, understanding how to connect them in series or parallel is crucial for maximizing efficiency and ...

[Request Quote](#)

[Can a lithium battery pack be used in series?](#)

In solar energy storage systems, for example, multiple lithium battery packs are often connected in series to store the energy generated by solar panels. The higher voltage ...

[Request Quote](#)





Contact Us

For catalog requests, pricing, or partnerships, please visit:

<https://www.energyinnovationday.pl>

Phone: +48 22 335 1273

Email: info@energyinnovationday.pl

Scan the QR code to contact us via WhatsApp.

