



100a solar container lithium battery with 2000w inverter





100a solar container lithium battery with 2000w inverter



[What size inverter can I run off a 100Ah lithium battery?](#)

A 2000W inverter can be used with a 100Ah lithium battery, but only for short periods. Using it continuously may damage the battery or cause the BMS to shut it down due to rapid power ...

[Request Quote](#)

How to Determine if a 100Ah Lithium Battery Can Run a 2000W ...

A 100Ah lithium battery can theoretically run a 2000W inverter, but several factors determine its effectiveness and safety. Understanding the battery's capacity, inverter ...

[Request Quote](#)



[Can I use a 2000W inverter with a 100Ah battery?](#)

Using a 2000W inverter with a 100Ah battery is theoretically possible but requires strict voltage compatibility and load management. A 12V 100Ah battery stores 1.2kWh ($12V \times 100Ah$), which ...

[Request Quote](#)



How to Determine if a 100Ah Lithium Battery Can Run a 2000W Inverter

A 100Ah lithium battery can theoretically run a 2000W inverter, but several factors determine its effectiveness and safety. Understanding the battery's capacity, inverter requirements, and ...



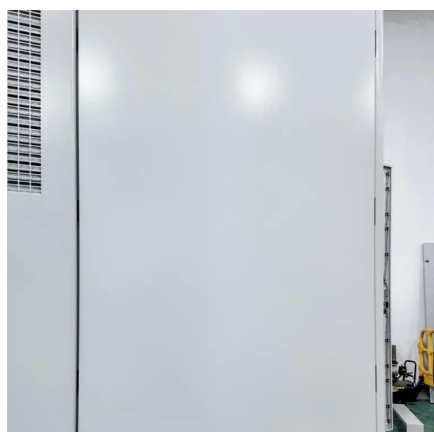
[Request Quote](#)



[100AH Battery for 2000 Watt Inverter?](#)

I'm considering buying one of the new Licitti 2000 watt AC battery boxes, which is equipped with a 2000 watt inverter in an enclosed configuration where there appears to be ...

[Request Quote](#)



[Can a 100Ah Battery Power a 2000W Inverter? Key Insights](#)

A 100Ah battery can technically run a 2000W inverter but only for 36-50 minutes at full load, assuming a 12V system and 85% inverter efficiency. Real-world runtime depends on battery ...

[Request Quote](#)



[Can a 12V 100Ah Lithium Ion Battery Power a ...](#)

When considering if a 12V 100Ah lithium ion battery can power a 2000W inverter, you must evaluate several factors. These include the ...

[Request Quote](#)



[Will a 100Ah Battery Run a 2000W](#)



[Inverter](#)

This article provides insights into the compatibility, runtime calculations, health impacts, alternative power solutions, and inverter ...

[Request Quote](#)



[Will a 100Ah Lithium Battery Run a 2000W Inverter?](#)

A 100Ah lithium battery can technically power a 2000W inverter but only for short durations (?30 minutes at full load). Key factors include battery voltage (12V/24V), inverter ...

[Request Quote](#)

[Will a 100Ah lithium battery run a 2000W inverter?](#)

A 100Ah lithium battery can technically run a 2000W inverter but with significant limitations. At 12V, its usable energy (after 80% depth of discharge and 90% inverter efficiency) is ~864Wh, ...

[Request Quote](#)



[Can I Run a 2000W Inverter with a 100Ah Battery?](#)

Running a 2000W inverter with a 100Ah battery is feasible, but practical usage may be limited. A fully charged 100Ah battery can provide approximately 1200 watt-hours (Wh) ...

[Request Quote](#)

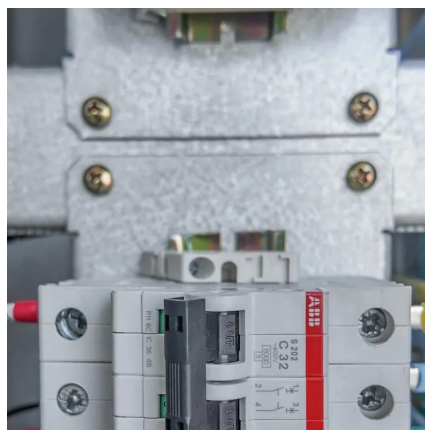
[Will a 100Ah Battery Run a 2000W](#)



[Inverter](#)

This article provides insights into the compatibility, runtime calculations, health impacts, alternative power solutions, and inverter selection for using 100Ah batteries with ...

[Request Quote](#)



[Can a 12V 100Ah Lithium Ion Battery Power a 2000W Inverter?](#)

When considering if a 12V 100Ah lithium ion battery can power a 2000W inverter, you must evaluate several factors. These include the battery's capacity and the inverter's ...

[Request Quote](#)



Contact Us

For catalog requests, pricing, or partnerships, please visit:

<https://www.energyinnovationday.pl>

Phone: +48 22 335 1273

Email: info@energyinnovationday.pl

Scan the QR code to contact us via WhatsApp.

